

# CoraLite® Plus 488-conjugated CD13 Polyclonal antibody

Catalog Number: **CL488-14553**

## Basic Information

**Catalog Number:**

CL488-14553

**Size:**

1000 µg/ml

**Source:**

Rabbit

**Isotype:**

IgG

**Immunogen Catalog Number:**

AG5976

**GenBank Accession Number:**

BC058928

**GeneID (NCBI):**

290

**ENSEMBL Gene ID:**

ENSG00000166825

**UNIPROT ID:**

P15144

**Full Name:**

alanyl (membrane) aminopeptidase

**Calculated MW:**

110 kDa

**Purification Method:**

Antigen affinity purification

**Recommended Dilutions:**

IF-P 1:50-1:500

**Excitation/Emission maxima wavelengths:**

493 nm / 522 nm

## Applications

**Tested Applications:**

IF

**Species Specificity:**

human, mouse, rat

**Positive Controls:**

IF-P: mouse kidney tissue,

## Background Information

CD13, also named as APN, ANPEP (aminopeptidase N) or PEPN, is a heavily glycosylated, ~150-240 kDa, type-II membrane, expressed by most cells of myeloid origin including monocytes, macrophages, granulocytes, and their hematopoietic precursors. It is also abundantly expressed in the brush border of epithelial cells from renal proximal tubules and small intestine, in prostatic epithelial cells, in bile duct canaliculi, in mast cells, and, in some cases, in fibroblasts and smooth muscle cells. CD13 is a multifunctional protein and plays varying roles in cell migration, cell proliferation, cell differentiation and so on. CD13 participates in angiogenesis generating and modulating angiogenic signals, and can be a marker of angiogenic vessels. CD13 is also a pan-myeloid marker, present on mature granulocytes and monocytes. (PMID: 8805662, 10098327, 18603472, 18097955, 17897790, 17888402, 21339174)

## Storage

**Storage:**

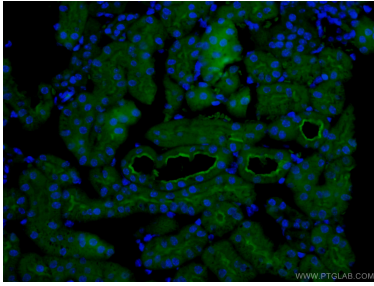
Store at -20°C. Avoid exposure to light.

**Storage Buffer:**

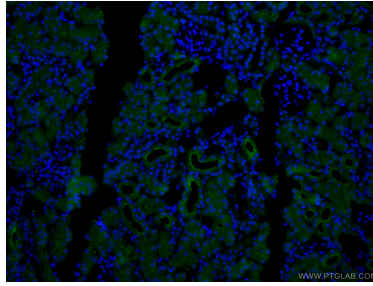
PBS with 50% Glycerol, 0.05% Proclin300, 0.5% BSA, pH 7.3.

Aliquoting is unnecessary for -20°C storage

## Selected Validation Data



Immunofluorescent analysis of (4% PFA) fixed mouse kidney tissue using CL488-14553 (CD13 antibody) at dilution of 1:50.



Immunofluorescent analysis of (4% PFA) fixed mouse kidney tissue using CL488-14553 (CD13 antibody) at dilution of 1:50.