

# CoraLite® Plus 488-conjugated AMH Polyclonal antibody

Catalog Number: **CL488-14461**

## Basic Information

**Catalog Number:**

CL488-14461

**Size:**

1000 µg/ml

**Source:**

Rabbit

**Isotype:**

IgG

**Immunogen Catalog Number:**

AG5670

**GenBank Accession Number:**

BC049194

**GeneID (NCBI):**

268

**UNIPROT ID:**

P03971

**Full Name:**

anti-Mullerian hormone

**Calculated MW:**

59 kDa

**Purification Method:**

Antigen affinity purification

**Recommended Dilutions:**

IF-P 1:50-1:500

**Excitation/Emission maxima wavelengths:**

493 nm / 522 nm

## Applications

**Tested Applications:**

IF-P

**Species Specificity:**

human, mouse, rat

**Positive Controls:**

IF-P : mouse ovary tissue,

## Background Information

Anti-Müllerian hormone (AMH), also called Müllerian-inhibiting substance (MIS), is a hormone that is best known for its production by fetal testes in mammals and as the inhibitor of Müllerian duct development in males. AMH is also expressed in granulosa cells of preantral and small antral follicles in the ovary. More recently, AMH has been studied for its role in ovarian folliculogenesis and as a potential marker of ovarian reserve. The deduced protein sequence of the AMH monomer contains a 25 amino acid secretion specific signal peptide and a monomeric protein of 535 amino acids that, when glycosylated at two glycosylation sites, has a molecular weight of 65-70 kDa. This antibody is specific to AMH.

## Storage

**Storage:**

Store at -20°C. Avoid exposure to light. Stable for one year after shipment.

**Storage Buffer:**

PBS with 50% Glycerol, 0.05% Proclin300, 0.5% BSA, pH 7.3.

Aliquoting is unnecessary for -20°C storage

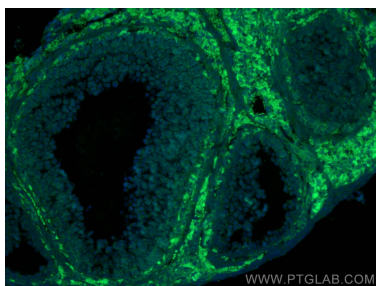
For technical support and original validation data for this product please contact:

T: 4006900926

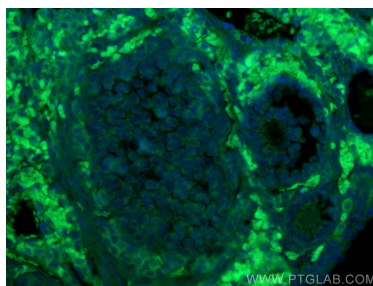
E: [Proteintech-CN@ptglab.com](mailto:Proteintech-CN@ptglab.com)W: [ptgcn.com](http://ptgcn.com)

This product is exclusively available under Proteintech Group brand and is not available to purchase from any other manufacturer.

## Selected Validation Data



Immunofluorescent analysis of (4% PFA) fixed mouse ovary tissue using Coralite® Plus 488 AMH antibody (CL488-14461) at dilution of 1:200.



Immunofluorescent analysis of (4% PFA) fixed mouse ovary tissue using Coralite® Plus 488 AMH antibody (CL488-14461) at dilution of 1:200.