

For Research Use Only

CoraLite® Plus 488-conjugated MAVS; VISA Polyclonal antibody



Catalog Number: **CL488-14341** **1 Publications**

Basic Information

Catalog Number: CL488-14341	GenBank Accession Number: BC044952	Purification Method: Antigen affinity purification
Size: 1000 µg/ml	GeneID (NCBI): 57506	Recommended Dilutions: IF 1:50-1:500
Source: Rabbit	UNIPROT ID: Q7Z434	Excitation/Emission maxima wavelengths: 493 nm / 522 nm
Isotype: IgG	Full Name: mitochondrial antiviral signaling protein	
Immunogen Catalog Number: AG5655	Calculated MW: 57 kDa	
	Observed MW: 50-55 kDa, 70-75 kDa	

Applications

Tested Applications: IF/ICC	Positive Controls: IF : HeLa cells,
Species Specificity: human	
Cited Species: human	

Background Information

Mitochondrial antiviral-signaling protein (MAVS) is also known as virus-induced-signaling adapter (VISA) or IFN beta promoter stimulator protein 1 (IPS-1), it is widely involved and required for innate immune defense against viruses. MAVS, present in T cells, monocytes, epithelial cells and hepatocytes, contains CARD and transmembrane domains which are essential for antiviral functions. MAVS is able to interact with various cellular proteins including DDX58/RIG-I, IFIH1/MDA5, TRAF2, TRAF6, TMEM173/MITA, IFIT3 and etc. This antibody is conjugated with CL488, Ex/Em 488 nm/515 nm.

Notable Publications

Author	Pubmed ID	Journal	Application
Ming Kuang	37595039	Sci Adv	

Storage

Storage:
Store at -20°C. Avoid exposure to light.
Storage Buffer:
PBS with 50% Glycerol, 0.05% Proclin300, 0.5% BSA, pH 7.3.
Aliquoting is unnecessary for -20°C storage

For technical support and original validation data for this product please contact:

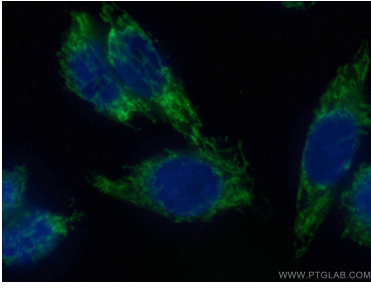
T: 4006900926

E: Proteintech-CN@ptglab.com

W: ptgcn.com

This product is exclusively available under Proteintech Group brand and is not available to purchase from any other manufacturer.

Selected Validation Data



Immunofluorescent analysis of (4% PFA) fixed HeLa cells using CL488-14341 (MAVS; VISA antibody) at dilution of 1:50.