

For Research Use Only

CoraLite® Plus 488-conjugated IRGC Polyclonal antibody

Catalog Number: CL488-14090



Basic Information

Catalog Number:

CL488-14090

Source:

Rabbit

Isotype:

IgG

Immunogen Catalog Number:

AG5279

GenBank Accession Number:

BC066939

GeneID (NCBI):

56269

UNIPROT ID:

Q6NXR0

Full Name:

immunity-related GTPase family, cinema

Calculated MW:

50 kDa

Observed MW:

50 kDa

Purification Method:

Antigen affinity purification

Recommended Dilutions:

IF/ICC: 1:50-1:500

Excitation/Emission maxima wavelengths:

493 nm / 522 nm

Applications

Tested Applications:

IF/ICC

Species Specificity:

human, mouse, rat

Positive Controls:

IF/ICC : SH-SY5Y cells,

Background Information

Storage

Storage:

Store at -20°C. Avoid exposure to light. Stable for one year after shipment.

Storage Buffer:

PBS with 50% glycerol, 0.05% Proclin300, 0.5% BSA, pH7.3

Aliquoting is unnecessary for -20°C storage

For technical support and original validation data for this product please contact:

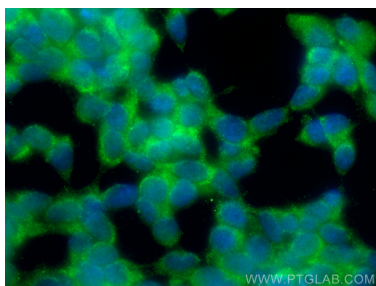
T: 4006900926

E: Proteintech-CN@ptglab.com

W: ptgcn.com

This product is exclusively available under Proteintech Group brand and is not available to purchase from any other manufacturer.

Selected Validation Data



Immunofluorescent analysis of (-20°C Ethanol) fixed SH-SY5Y cells using CoraLite® Plus 488 IRGC antibody (CL488-14090) at dilution of 1:200.