

For Research Use Only

# CoraLite® Plus 488-conjugated IFT88 Polyclonal antibody



Catalog Number: CL488-13967

Featured Product

## Basic Information

Catalog Number:

CL488-13967

Size:

1000 µg/ml

Source:

Rabbit

Isotype:

IgG

Immunogen Catalog Number:

AG4980

GenBank Accession Number:

BC030776

GeneID (NCBI):

8100

UNIPROT ID:

Q13099

Full Name:

intraflagellar transport 88 homolog  
(Chlamydomonas)

Calculated MW:

94 kDa

Observed MW:

88-95 kDa

Purification Method:

Antigen affinity purification

Recommended Dilutions:

IF/ICC 1:50-1:500

Excitation/Emission maxima  
wavelengths:

493 nm / 522 nm

## Applications

Tested Applications:

IF/ICC

Species Specificity:

human, mouse, rat, Canine

Positive Controls:

IF/ICC : C2C12 cells, MDCK cells

## Background Information

Intraflagellar transport (IFT), mediated by molecular motors and IFT particles, is an important transport process that occurs in the cilium and has been shown to be essential for the assembly and maintenance of cilia and flagella in many organisms. IFT88 (intraflagellar transport protein 88; also known as TG737 or TTC10) is a component of IFT particles and required for cilium biogenesis. Defects in IFT88/TG737 lead to polycystic kidney disease (11062270). IFT88 localizes to spindle poles during mitosis and is required for spindle orientation in mitosis (21441926). This antibody was raised against the C-terminal region of human IFT88 and can detect the endogenous level of IFT88.

## Storage

Storage:

Store at -20°C. Avoid exposure to light.

Storage Buffer:

PBS with 50% Glycerol, 0.05% Proclin300, 0.5% BSA, pH 7.3.

Aliquoting is unnecessary for -20°C storage

For technical support and original validation data for this product please contact:

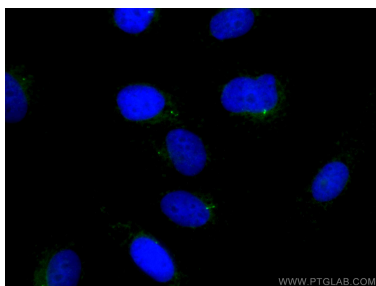
T: 4006900926

E: [Proteintech-CN@ptglab.com](mailto:Proteintech-CN@ptglab.com)

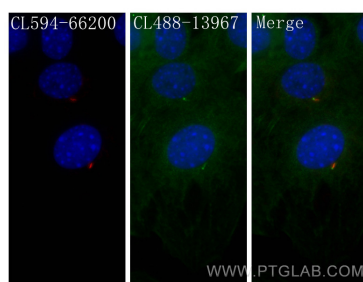
W: [ptgcn.com](http://ptgcn.com)

This product is exclusively available under Proteintech Group brand and is not available to purchase from any other manufacturer.

## Selected Validation Data



Immunofluorescent analysis of (4% PFA) fixed MDCK cells using CoraLite® Plus 488 IFT88 antibody (CL488-13967) at dilution of 1:200.



Immunofluorescent analysis of (4% PFA) fixed C2C12 cells using CoraLite® Plus 488 IFT88 antibody (CL488-13967) at dilution of 1:200, CoraLite® 594 acetylated Tubulin(Lys40) antibody (CL594-66200, Clone: 7E5H8, red).