

CoraLite® Plus 488-conjugated BOULE Polyclonal antibody

Catalog Number: **CL488-13720**

Basic Information

Catalog Number:

CL488-13720

Size:

1000 µg/ml

Source:

Rabbit

Isotype:

IgG

Immunogen Catalog Number:

AG4662

GenBank Accession Number:

BC033674

GeneID (NCBI):

66037

UNIPROT ID:

Q8N9W6

Full Name:

bol, boule-like (Drosophila)

Calculated MW:

283 aa, 31 kDa

Purification Method:

Antigen affinity purification

Recommended Dilutions:

IF-P 1:200-1:800

IF-Fro 1:50-1:500

**Excitation/Emission maxima
wavelengths:**

493 nm / 522 nm

Applications

Tested Applications:

IF-P, IF-Fro

Species Specificity:

human, mouse, rat

Positive Controls:

IF-P : mouse testis tissue,

IF-Fro : mouse testis tissue,

Background Information

BOULE, also called BOLL, belongs to the RRM DAZ family. BOULE has been identified as being involved in regulating the development and differentiation of germ cells and playing an essential role in infertility (PMID: 31683986). BOULE is specifically expressed in testis, but not in early embryos, primordial germ cells, and spermatogonial cells. It is first expressed in the cytoplasm of spermatocytes and then persists through meiosis. BOULE has 5 isoforms with the molecular mass of 19 and 31-38 kDa. This antibody detects two bands in testis, the lower band of ~40 kDa in size corresponds to the predicted endogenous BOULE protein, while the upper band may be an isoform or posttranslationally modified version of the BOULE protein (PMID: 27632217).

Storage

Storage:

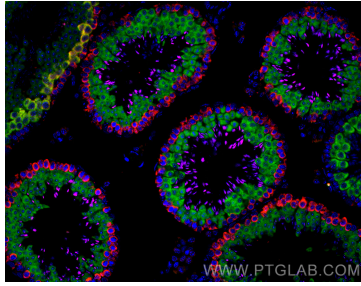
Store at -20°C. Avoid exposure to light. Stable for one year after shipment.

Storage Buffer:

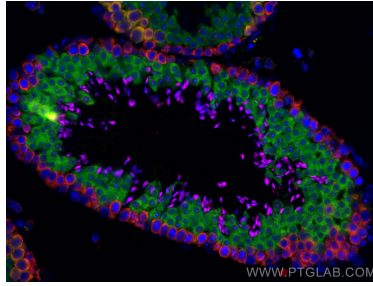
PBS with 50% Glycerol, 0.05% Proclin300, 0.5% BSA, pH 7.3.

Aliquoting is unnecessary for -20°C storage

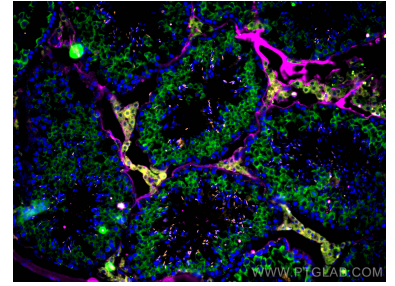
Selected Validation Data



Immunofluorescent analysis of (4% PFA) fixed mouse testis tissue using CoraLite® Plus 488 BOULE antibody (CL488-13720) at dilution of 1:400, CoraLite® 594 DAZL antibody (CL594-12633, red), CoraLite® Plus 647 TNP1 antibody (CL647-17178, Magenta).



Immunofluorescent analysis of (4% PFA) fixed mouse testis tissue using CoraLite® Plus 488 BOULE antibody (CL488-13720) at dilution of 1:400, CoraLite® 594 DAZL antibody (CL594-12633, red), CoraLite® Plus 647 TNP1 antibody (CL647-17178, Magenta).



Immunofluorescent analysis of (4% PFA) fixed frozen OCT-embedded mouse testis tissue using CoraLite® Plus 488 CL488-13720 (BOULE antibody) at dilution of 1:100, CoraLite® 555 CL555-17178 (TNP1 antibody, orange) and 67130-1-Ig (STAR antibody, Magenta).