

For Research Use Only

# CoraLite® Plus 488-conjugated LARP1 Polyclonal antibody



Catalog Number: CL488-13708

Featured Product

## Basic Information

Catalog Number:

CL488-13708

Size:

1000 µg/ml

Source:

Rabbit

Isotype:

IgG

Immunogen Catalog Number:

AG4645

GenBank Accession Number:

BC033856

GeneID (NCBI):

23367

UNIPROT ID:

Q6PKGO

Full Name:

La ribonucleoprotein domain family,  
member 1

Calculated MW:

1096 aa, 124 kDa

Observed MW:

140-150 kDa

Purification Method:

Antigen affinity purification

Recommended Dilutions:

IF 1:50-1:500

Excitation/Emission maxima  
wavelengths:

493 nm / 522 nm

## Applications

Tested Applications:

IF/ICC

Species Specificity:

human, mouse, rat, drosophila

Positive Controls:

IF : HepG2 cells,

## Background Information

LARP1, full named as La-related Protein 1, is an oncogenic RNA-binding protein required for ribosome biogenesis and cancer cell survival. (PMID: 32286153) It's has been proposed to function downstream of mTORC1 to regulate the translation of 5'TOP mRNAs such as those encoding ribosome proteins (RP). (PMID: 28650797) LARP1 has 2 isoforms with MW of 123-150KDa. With CL647, immunoflorescence detected location in cytoplasm.

## Storage

Storage:

Store at -20°C. Avoid exposure to light. Stable for one year after shipment.

Storage Buffer:

PBS with 50% Glycerol, 0.05% Proclin300, 0.5% BSA, pH 7.3.

Aliquoting is unnecessary for -20°C storage

For technical support and original validation data for this product please contact:

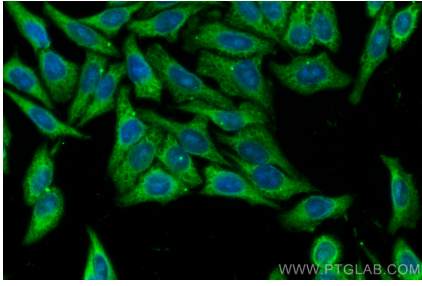
T: 4006900926

E: [Proteintech-CN@ptglab.com](mailto:Proteintech-CN@ptglab.com)

W: [ptgcn.com](http://ptgcn.com)

This product is exclusively available under Proteintech Group brand and is not available to purchase from any other manufacturer.

## Selected Validation Data



Immunofluorescent analysis of (-20°C Ethanol) fixed HepG2 cells using CoraLite® Plus 488 LARP1 antibody (CL488-13708) at dilution of 1:200.