

For Research Use Only

# CoraLite® Plus 488-conjugated UGDH Polyclonal antibody



Catalog Number: CL488-13151

Featured Product

## Basic Information

Catalog Number:

CL488-13151

Size:

1000 µg/ml

Source:

Rabbit

Isotype:

IgG

Immunogen Catalog Number:

AG3767

GenBank Accession Number:

BC022781

GeneID (NCBI):

7358

UNIPROT ID:

O60701

Full Name:

UDP-glucose dehydrogenase

Calculated MW:

494 aa, 55 kDa

Observed MW:

55-60 kDa

Purification Method:

Antigen affinity purification

Recommended Dilutions:

IF/ICC 1:50-1:500

Excitation/Emission maxima  
wavelengths:

493 nm / 522 nm

## Applications

Tested Applications:

IF/ICC

Species Specificity:

human, mouse, rat

Positive Controls:

IF/ICC : HepG2 cells,

## Background Information

UDP-glucose 6-dehydrogenase (UGDH) is a key enzyme in the uronic acid pathway, and converts UDP-glucose (UDP-Glc) to UDP-glucuronic acid (UDP-GlcA). UGDH is critical to the production of extracellular matrix components which are essential to the migration and connectivity of neurons early in human brain development. UDP-GlcA is an essential sugar nucleotide precursor and a key component in the synthesis and stepwise degradation of glycosaminoglycans (GAGs). The protein subunit migrates on SDS-PAGE at ~55 kDa. (PMID: 32175296, PMID: 21576248, PMID: 31243371).

## Storage

Storage:

Store at -20°C. Avoid exposure to light. Stable for one year after shipment.

Storage Buffer:

PBS with 50% Glycerol, 0.05% Proclin300, 0.5% BSA, pH 7.3.

Aliquoting is unnecessary for -20°C storage

For technical support and original validation data for this product please contact:

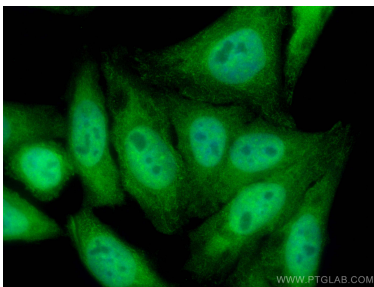
T: 4006900926

E: [Proteintech-CN@ptglab.com](mailto:Proteintech-CN@ptglab.com)

W: [ptgcn.com](http://ptgcn.com)

This product is exclusively available under Proteintech Group brand and is not available to purchase from any other manufacturer.

## Selected Validation Data



Immunofluorescent analysis of (4% PFA) fixed HepG2 cells using CoraLite® Plus 488 UGDH antibody (CL488-13151) at dilution of 1:200.