

CoraLite® Plus 488-conjugated Neuropeptide Y Polyclonal antibody

Catalog Number: **CL488-12833**

Basic Information

Catalog Number:

CL488-12833

Size:

1000 µg/ml

Source:

Rabbit

Isotype:

IgG

Immunogen Catalog Number:

AG3568

GenBank Accession Number:

BC029497

GeneID (NCBI):

4852

UNIPROT ID:

P01303

Full Name:

neuropeptide Y

Calculated MW:

97 aa, 11 kDa

Purification Method:

Antigen affinity purification

Recommended Dilutions:

IF-P 1:50-1:500

Excitation/Emission maxima wavelengths:

493 nm / 522 nm

Applications

Tested Applications:

IF-P

Species Specificity:

human, mouse, rat

Positive Controls:

IF-P : mouse eye tissue,

Background Information

Neuropeptide Y (NPY) is one of the most abundant peptides in the mammalian central nervous system (CNS). NPY has been linked to several physiological and pathological functions, such as feeding behaviour, memory processing, pain, anxiety, cell proliferation and many other processes in the central and peripheral nervous systems. The neuropeptide functions through G protein-coupled receptors to inhibit adenylyl cyclase, activate mitogen-activated protein kinase (MAPK), regulate intracellular calcium levels, and activate potassium channels. In addition, NPY was suggested as a potential neuroprotective agent in Alzheimer's disease by counteracting the toxic effect of β -amyloid in an in vitro model.

Storage

Storage:

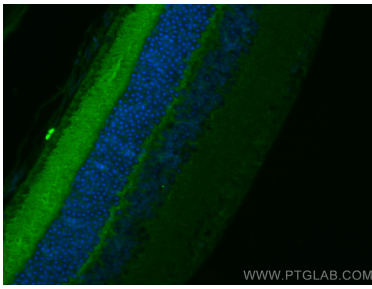
Store at -20°C. Avoid exposure to light. Stable for one year after shipment.

Storage Buffer:

PBS with 50% Glycerol, 0.05% Proclin300, 0.5% BSA, pH 7.3.

Aliquoting is unnecessary for -20°C storage

Selected Validation Data



Immunofluorescent analysis of (4% PFA) fixed mouse eye tissue using CoraLite® Plus 488 Neuropeptide Y antibody (CL488-12833) at dilution of 1:200.