

For Research Use Only

CoraLite® Plus 488-conjugated SLP76 Polyclonal antibody



Catalog Number: **CL488-12728**

Basic Information

Catalog Number:

CL488-12728

Size:

1000 µg/ml

Source:

Rabbit

Isotype:

IgG

Immunogen Catalog Number:

AG3432

GenBank Accession Number:

BC016618

GeneID (NCBI):

3937

UNIPROT ID:

Q13094

Full Name:

Lymphocyte cytosolic protein 2 (SH2 domain containing leukocyte protein of 76kDa)

Calculated MW:

533 aa, 60 kDa

Observed MW:

70-76 kDa

Purification Method:

Antigen affinity purification

Excitation/Emission maxima wavelengths:

493 nm / 522 nm

Applications

Tested Applications:

FC (Intra)

Species Specificity:

human, mouse, rat

Background Information

Storage

Storage:

Store at -20°C. Avoid exposure to light. Stable for one year after shipment.

Storage Buffer:

PBS with 50% Glycerol, 0.05% Proclin300, 0.5% BSA, pH 7.3.

Aliquoting is unnecessary for -20°C storage

For technical support and original validation data for this product please contact:

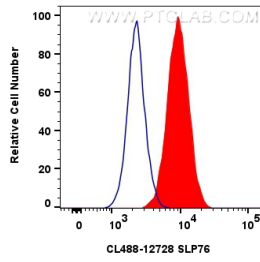
T: 4006900926

E: Proteintech-CN@ptglab.com

W: ptgcn.com

This product is exclusively available under Proteintech Group brand and is not available to purchase from any other manufacturer.

Selected Validation Data



1x10⁶ Jurkat cells were intracellularly stained with 0.8 ug CoraLite® Plus 488 Anti-Human SLP76 (CL488-12728) (red), or 0.8 ug CoraLite® Plus 488-conjugated Rabbit IgG control Rabbit PolyAb (CL488-30000, Clone:) (blue). Cells were fixed with 4% PFA and permeabilized with Flow Cytometry Perm Buffer (PF00011-C).