

For Research Use Only

# CoraLite® Plus 488-conjugated golgin 97 Polyclonal antibody

Catalog Number: CL488-12640



## Basic Information

Catalog Number:

CL488-12640

Size:

1000 µg/ml

Source:

Rabbit

Isotype:

IgG

Immunogen Catalog Number:

AG3335

GenBank Accession Number:

BC032853

GeneID (NCBI):

2800

UNIPROT ID:

Q92805

Full Name:

golgi autoantigen, golgin subfamily a, 1

Calculated MW:

767 aa, 88 kDa

Observed MW:

97 kDa

Purification Method:

Antigen affinity purification

Recommended Dilutions:

IF/ICC 1:200-1:800

Excitation/Emission maxima wavelengths:

493 nm / 522 nm

## Applications

Tested Applications:

IF/ICC, FC (Intra)

Species Specificity:

human, mouse

Positive Controls:

IF/ICC : HeLa cells,

## Background Information

Golgin subfamily A member 1 is a protein that in humans is encoded by the GOLGA1 gene. GOLGA1 has been shown to interact with ARL1. GOLGA1 is associated with Sjogren's syndrome. The MW of this protein is 97 kDa. IF result shows strong Golgi staining.

## Storage

Storage:

Store at -20°C. Avoid exposure to light. Stable for one year after shipment.

Storage Buffer:

PBS with 50% Glycerol, 0.05% Proclin300, 0.5% BSA, pH 7.3.

Aliquoting is unnecessary for -20°C storage

For technical support and original validation data for this product please contact:

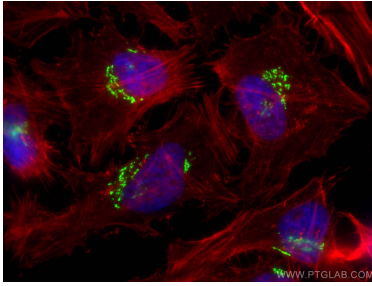
T: 4006900926

E: [Proteintech-CN@ptglab.com](mailto:Proteintech-CN@ptglab.com)

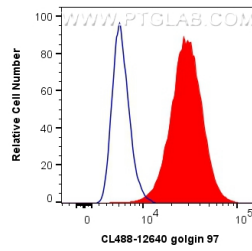
W: [ptgcn.com](http://ptgcn.com)

This product is exclusively available under Proteintech Group brand and is not available to purchase from any other manufacturer.

## Selected Validation Data



Immunofluorescent analysis of (4% PFA) fixed HeLa cells using CoraLite® Plus 488 golgin 97 antibody (CL488-12640) at dilution of 1:400, CL594-phalloidin (red).



1X10<sup>6</sup> HeLa cells were intracellularly stained with 0.8 ug CoraLite® Plus 488 Anti-Human golgin 97 (CL488-12640) (red), or 0.8 ug Isotype Control. Cells were fixed with 4% PFA and permeabilized with Flow Cytometry Perm Buffer (PF00011-C).