

For Research Use Only



# CoraLite® Plus 488-conjugated Hemoglobin Epsilon Polyclonal antibody

Catalog Number: **CL488-12361**

## Basic Information

Catalog Number: <b>CL488-12361</b>	GenBank Accession Number: <b>BC015537</b>	Purification Method: <b>Antigen affinity purification</b>
Concentration: <b>1000 µg/ml</b>	GeneID (NCBI): <b>3046</b>	Excitation/Emission maxima wavelengths: <b>493 nm / 522 nm</b>
Source: <b>Rabbit</b>	UNIPROT ID: <b>P02100</b>	
Isotype: <b>IgG</b>	Full Name: <b>hemoglobin, epsilon 1</b>	
Immunogen Catalog Number: <b>AG3026</b>	Calculated MW: <b>147 aa, 16 kDa</b>	
	Observed MW: <b>12-16 kDa</b>	

## Applications

Tested Applications:  
**FC (Intra)**

Species Specificity:  
**human, mouse, rat**

## Background Information

The hemoglobin molecule is a tetramer consisting of two alpha- and two beta-globin-like chains. HBE1 (hemoglobin epsilon chain) is a beta-type chain of hemoglobin predominantly expressed during the embryonic stage (21321359). The HBE1 has been regarded as the best marker for fetal nucleated red blood cells (NRBCs). This antibody can be used to label and isolate fetal cells from maternal blood and may be useful in prenatal diagnosis (15906407).

## Storage

Storage:  
Store at -20°C. Avoid exposure to light. Stable for one year after shipment.

Storage Buffer:  
PBS with 50% glycerol, 0.05% Proclin300, 0.5% BSA, pH7.3

Aliquoting is unnecessary for -20°C storage

For technical support and original validation data for this product please contact:

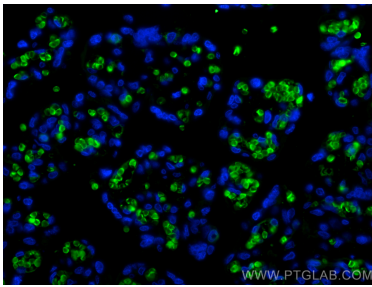
T: 4006900926

E: [Proteintech-CN@ptglab.com](mailto:Proteintech-CN@ptglab.com)

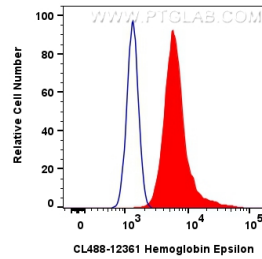
W: [ptgcn.com](http://ptgcn.com)

This product is exclusively available under Proteintech Group brand and is not available to purchase from any other manufacturer.

## Selected Validation Data



Immunofluorescent analysis of (4% PFA) fixed paraffin-embedded human placenta tissue using CoraLite® Plus 488 Hemoglobin Epsilon antibody (CL488-12361) at dilution of 1:200. Heat mediated antigen retrieval with Tris-EDTA buffer (pH 9.0).



$1 \times 10^6$  K-562 cells were intracellularly stained with 0.8  $\mu$ g CoraLite® Plus 488-conjugated Hemoglobin Epsilon Polyclonal antibody (CL488-12361)(red), or 0.8  $\mu$ g CoraLite® Plus 488-conjugated Rabbit IgG control Rabbit PolyAb (CL488-30000) (blue). Cells were fixed with 4% PFA and permeabilized with Flow Cytometry Perm Buffer (PF00011-C).