

For Research Use Only

CoraLite® Plus 488-conjugated DYNC1H1 Polyclonal antibody



Catalog Number: CL488-12345

Featured Product

Basic Information

Catalog Number:

CL488-12345

Size:

1000 µg/ml

Source:

Rabbit

Isotype:

IgG

Immunogen Catalog Number:

AG2999

GenBank Accession Number:

BC021297

GeneID (NCBI):

1778

UNIPROT ID:

Q14204

Full Name:

dynein, cytoplasmic 1, heavy chain 1

Calculated MW:

4646 aa, 532 kDa

Observed MW:

532 kDa

Purification Method:

Antigen affinity purification

Recommended Dilutions:

IF/ICC 1:50-1:500

Excitation/Emission maxima
wavelengths:

493 nm / 522 nm

Applications

Tested Applications:

IF/ICC

Species Specificity:

human, rat, zebrafish, mouse

Positive Controls:

IF/ICC : MCF-7 cells,

Background Information

Dyneins are a group of microtubule-activated ATPases that serve to convert chemical energy into mechanical energy. It can be divided into 2 large subgroups, namely, the axonemal and cytoplasmic dyneins. The conventional cytoplasmic dynein are comprised of 2 heavy chain polypeptides and a number of intermediate and light chains. DYNC1H1 is a cytoplasmic dynein and belongs to the dynein heavy chain family. It acts as a motor for the intracellular retrograde motility of vesicles and organelles along microtubules. DYNC1H1 has been implicated in the degeneration of dopaminergic neuron axons and motor neurons in PD patients..

Storage

Storage:

Store at -20°C. Avoid exposure to light. Stable for one year after shipment.

Storage Buffer:

PBS with 50% Glycerol, 0.05% Proclin300, 0.5% BSA, pH 7.3.

Aliquoting is unnecessary for -20°C storage

For technical support and original validation data for this product please contact:

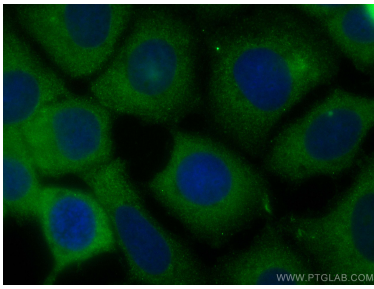
T: 4006900926

E: Proteintech-CN@ptglab.com

W: ptgcn.com

This product is exclusively available under Proteintech Group brand and is not available to purchase from any other manufacturer.

Selected Validation Data



Immunofluorescent analysis of (-20°C Methanol) fixed MCF-7 cells using CoraLite® Plus 488 DYNC1H1 antibody (CL488-12345) at dilution of 1:200.