

CoraLite® Plus 488-conjugated SERPING1/C1 Inactivator Polyclonal antibody

Catalog Number: CL488-12259

Basic Information

Catalog Number:

CL488-12259

Size:

1000 µg/ml

Source:

Rabbit

Isotype:

IgG

Immunogen Catalog Number:

AG2819

GenBank Accession Number:

BC011171

GeneID (NCBI):

710

UNIPROT ID:

P05155

Full Name:serpin peptidase inhibitor, clade G
(C1 inhibitor), member 1**Calculated MW:**

500 aa, 55 kDa

Observed MW:

100 kDa

Purification Method:

Antigen affinity purification

Recommended Dilutions:

IF/ICC 1:50-1:500

**Excitation/Emission maxima
wavelengths:**

493 nm / 522 nm

Applications

Tested Applications:

IF/ICC

Species Specificity:

human, mouse

Positive Controls:

IF/ICC : HepG2 cells,

Background Information

SERPING1, also known as C1 Inhibitor (C1INH), is a member of the Serine proteinase inhibitor family. Its main function is the inhibition of the complement system to prevent spontaneous activation. It inhibits activated C1r and C1s of the first complement component and thus regulates complement activation. Deficiency of this protein is associated with hereditary angioneurotic oedema (HANE). C1INH is the most heavily glycosylated plasma protein. Of its 95-105 kDa apparent molecular mass, the protein moiety of 500 aa accounts for only 55 kDa. The native 105 kDa form of C1INH could be cleaved into 60-65 kDa fragments.

Storage

Storage:

Store at -20°C. Avoid exposure to light. Stable for one year after shipment.

Storage Buffer:

PBS with 50% Glycerol, 0.05% Proclin300, 0.5% BSA, pH 7.3.

Aliquoting is unnecessary for -20°C storage

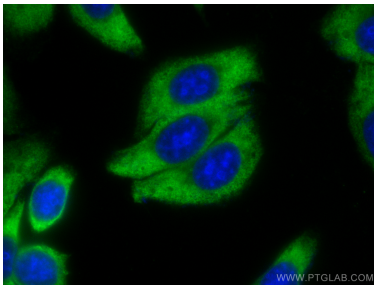
For technical support and original validation data for this product please contact:

T: 4006900926

E: Proteintech-CN@ptglab.comW: ptgcn.com

This product is exclusively available under Proteintech Group brand and is not available to purchase from any other manufacturer.

Selected Validation Data



Immunofluorescent analysis of (-20°C Ethanol)
fixed HepG2 cells using Coralite® Plus 488
SERPING1/C1 Inactivator antibody (CL488-12259)
at dilution of 1:200.