

# CoraLite<sup>®</sup> Plus 488-conjugated Cystatin C Polyclonal antibody

Catalog Number: **CL488-12245**

## Basic Information

**Catalog Number:**

CL488-12245

**Size:**

1000 µg/ml

**Source:**

Rabbit

**Isotype:**

IgG

**Immunogen Catalog Number:**

AG2890

**GenBank Accession Number:**

BC013083

**GeneID (NCBI):**

1471

**UNIPROT ID:**

P01034

**Full Name:**

cystatin C

**Calculated MW:**

146 aa, 16 kDa

**Observed MW:**

13 kDa

**Purification Method:**

Antigen affinity purification

**Recommended Dilutions:**

IF-P 1:50-1:500

IF/ICC 1:50-1:500

**Excitation/Emission maxima  
wavelengths:**

493 nm / 522 nm

## Applications

**Tested Applications:**

IF/ICC, IF-P

**Species Specificity:**

human, mouse

**Positive Controls:**

IF-P : mouse kidney tissue,

IF/ICC : HeLa cells,

## Background Information

Cystatin C is a 13-kDa inhibitor of cysteine proteinases which is secreted by all cell types and is completely cleared from the organism through glomerular filtration, shown to be an early and sensitive biomarker of renal dysfunction. It is also used as an emerging biomarker in cardiovascular disease. Cystatin C is involved in a variety of inflammatory reactions. The concentration of serum cystatin C has also been shown to be unaltered in certain inflammatory conditions or other disorders of metabolism. The plasma level of serum cystatin C can be expressed as its level of generation from cells and diet and its subsequent elimination through the gut, liver, and kidneys.

## Storage

**Storage:**

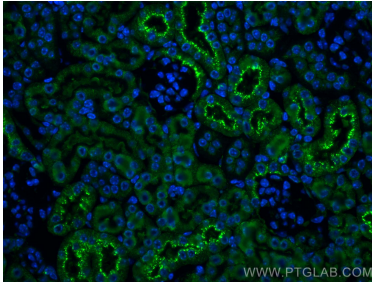
Store at -20°C. Avoid exposure to light. Stable for one year after shipment.

**Storage Buffer:**

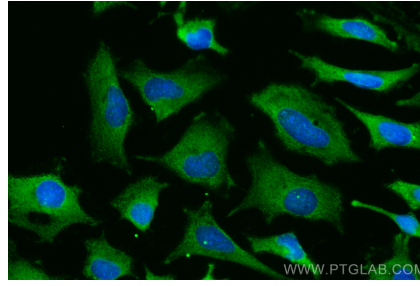
PBS with 50% Glycerol, 0.05% Proclin300, 0.5% BSA, pH 7.3.

Aliquoting is unnecessary for -20°C storage

## Selected Validation Data



Immunofluorescent analysis of (4% PFA) fixed paraffin-embedded mouse kidney tissue using CoraLite® Plus 488 Cystatin C antibody (CL488-12245) at dilution of 1:200. Heat mediated antigen retrieval with Tris-EDTA buffer (pH 9.0).



Immunofluorescent analysis of (-20°C Methanol) fixed HeLa cells using CoraLite® Plus 488 Cystatin C antibody (CL488-12245) at dilution of 1:200.