

For Research Use Only

# CoraLite® Plus 488-conjugated DVL2 Polyclonal antibody



Catalog Number: CL488-12037

Featured Product

## Basic Information

Catalog Number:

CL488-12037

Size:

1000 µg/ml

Source:

Rabbit

Isotype:

IgG

Immunogen Catalog Number:

AG2666

GenBank Accession Number:

BC014844

GeneID (NCBI):

1856

UNIPROT ID:

O14641

Full Name:

dishevelled, dsh homolog 2  
(Drosophila)

Calculated MW:

736 aa, 79 kDa

Observed MW:

90-95 kDa

Purification Method:

Antigen affinity purification

Recommended Dilutions:

IF 1:200-1:800

Excitation/Emission maxima  
wavelengths:

493 nm / 522 nm

## Applications

Tested Applications:

IF/ICC

Species Specificity:

human, mouse, rat

Positive Controls:

IF : HepG2 cells,

## Background Information

DVL2 is member of the dishevelled (dsh) protein family. DVL2 encodes a 90-kD protein that undergoes posttranslational phosphorylation to form a 95-kD cytoplasmic protein in a variety of cell lines and species. DVL2 participates in Wnt signaling by binding to the cytoplasmic C-terminus of frizzled family members and transducing the Wnt signal to down-stream effectors. It promotes internalization and degradation of frizzled proteins upon Wnt signaling. It plays a role both in canonical and non-canonical Wnt signaling. It also Plays a role in the signal transduction pathways mediated by multiple Wnt genes.

## Storage

Storage:

Store at -20°C. Avoid exposure to light. Stable for one year after shipment.

Storage Buffer:

PBS with 50% Glycerol, 0.05% Proclin300, 0.5% BSA, pH 7.3.

Aliquoting is unnecessary for -20°C storage

For technical support and original validation data for this product please contact:

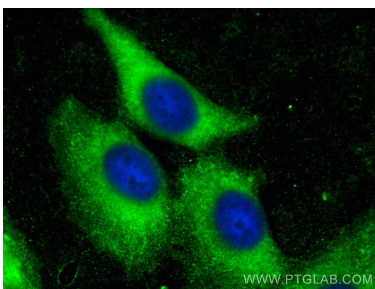
T: 4006900926

E: [Proteintech-CN@ptglab.com](mailto:Proteintech-CN@ptglab.com)

W: [ptgcn.com](http://ptgcn.com)

This product is exclusively available under Proteintech Group brand and is not available to purchase from any other manufacturer.

## Selected Validation Data



Immunofluorescent analysis of (-20°C Ethanol) fixed HepG2 cells using CoraLite® Plus 488 DVL2 antibody (CL488-12037) at dilution of 1:400.