

For Research Use Only

# CoraLite® Plus 488-conjugated CSPP1 Polyclonal antibody



Catalog Number: **CL488-11931**

Featured Product

## Basic Information

Catalog Number:

CL488-11931

Size:

1000 µg/ml

Source:

Rabbit

Isotype:

IgG

Immunogen Catalog Number:

AG2521

GenBank Accession Number:

BC029445

GeneID (NCBI):

79848

UNIPROT ID:

Q1MSJ5

Full Name:

centrosome and spindle pole  
associated protein 1

Calculated MW:

141 kDa

Observed MW:

141 kDa

Purification Method:

Antigen affinity purification

Recommended Dilutions:

IF/ICC 1:50-1:500

Excitation/Emission maxima  
wavelengths:

493 nm / 522 nm

## Applications

Tested Applications:

IF/ICC

Species Specificity:

human, mouse, rat

Positive Controls:

IF/ICC : HeLa cells,

## Background Information

CSPP1 interacts with centrosomes and microtubules and plays a role in cell-cycle progression and spindle organization. CSPP1 is required for their common C-terminal domain to interact with Nephrocystin 8 (NPHP8/RPGRIPL1) and to form a ternary complex with NPHP8 and NPHP4, and for ciliogenesis in hTERT-RPE1 cells in vitro and are expressed in ciliated renal, retinal, and respiratory cells in vivo

## Storage

Storage:

Store at -20°C. Avoid exposure to light.

Storage Buffer:

PBS with 50% Glycerol, 0.05% Proclin300, 0.5% BSA, pH 7.3.

Aliquoting is unnecessary for -20°C storage

For technical support and original validation data for this product please contact:

T: 4006900926

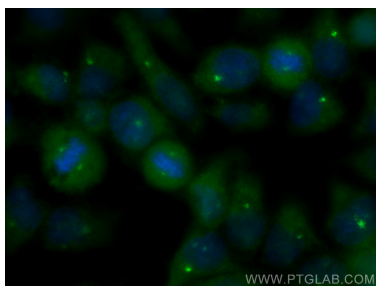
E: [Proteintech-CN@ptglab.com](mailto:Proteintech-CN@ptglab.com)

W: [ptgcn.com](http://ptgcn.com)

This product is exclusively available under Proteintech Group brand and is not available to purchase from any other manufacturer.

---

## Selected Validation Data



Immunofluorescent analysis of (-20°C Methanol) fixed HeLa cells using CoraLite® Plus 488 CSPP1 antibody (CL488-11931) at dilution of 1:200.