

For Research Use Only

CoraLite® Plus 488-conjugated Surfactant Protein A Polyclonal antibody



Catalog Number: **CL488-11850**

Basic Information

Catalog Number: CL488-11850	GenBank Accession Number: BC026229	Purification Method: Antigen affinity purification
Size: 1000 µg/ml	GeneID (NCBI): 653509	Excitation/Emission maxima wavelengths: 493 nm / 522 nm
Source: Rabbit	UNIPROT ID: Q8IWL2	
Isotype: IgG	Full Name: surfactant protein A1	
Immunogen Catalog Number: AG2417	Calculated MW: 248 aa, 26 kDa	

Applications

Tested Applications:
FC (Intra)

Species Specificity:
human

Background Information

Surfactant protein A (SP-A), is the major protein component of pulmonary surfactant involved in surfactant-related function or structure and in the regulation of inflammatory processes and innate host defenses. In humans and primates, SP-A1 (SFTPA1) and SP-A2 (SFTPA2) genes encode SP-A, and these two SP-A genes have high homology (PMID: 34484180, PMID: 19392648). This antibody can recognize both SP-A1 (SFTPA1) and SP-A2 (SFTPA2).

Storage

Storage:
Store at -20°C. Avoid exposure to light. Stable for one year after shipment.

Storage Buffer:
PBS with 50% Glycerol, 0.05% Proclin300, 0.5% BSA, pH 7.3.

Aliquoting is unnecessary for -20°C storage

For technical support and original validation data for this product please contact:

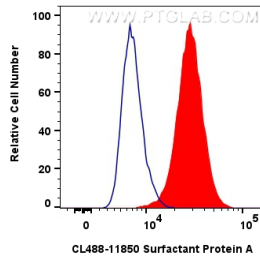
T: 4006900926

E: Proteintech-CN@ptglab.com

W: ptgcn.com

This product is exclusively available under Proteintech Group brand and is not available to purchase from any other manufacturer.

Selected Validation Data



1x10⁶ A549 cells were intracellularly stained with 0.8 ug CoraLite® Plus 488 Anti-Human Surfactant Protein A (CL488-11850)(red), or 0.8 ug CoraLite® Plus 488-conjugated Rabbit IgG control Rabbit PolyAb (CL488-30000) (blue). Cells were fixed with 4% PFA and permeabilized with Flow Cytometry Perm Buffer (PF00011-C).