

For Research Use Only

CoraLite® Plus 488-conjugated RAB10 Polyclonal antibody



Catalog Number: **CL488-11808**

Featured Product

Basic Information

Catalog Number:

CL488-11808

Size:

1000 µg/ml

Source:

Rabbit

Isotype:

IgG

Immunogen Catalog Number:

AG2473

GenBank Accession Number:

BC000896

GeneID (NCBI):

10890

UNIPROT ID:

P61026

Full Name:

RAB10, member RAS oncogene family

Calculated MW:

200 aa, 23 kDa

Observed MW:

23 kDa

Purification Method:

Antigen affinity purification

Recommended Dilutions:

IF/ICC 1:50-1:500

Excitation/Emission maxima
wavelengths:

493 nm / 522 nm

Applications

Tested Applications:

IF/ICC

Species Specificity:

human, mouse, rat, Canine

Positive Controls:

IF/ICC : NIH/3T3 cells, MCF-7 cells

Background Information

RAB10 belongs to the RAS superfamily of small GTPases. RAB10 localizes to a system of tubules and vesicles, and it may be involved in vesicular trafficking and neurotransmitter release. It is also associated with Glut4 translocation in adipocytes.

Storage

Storage:

Store at -20°C. Avoid exposure to light. Stable for one year after shipment.

Storage Buffer:

PBS with 50% Glycerol, 0.05% Proclin300, 0.5% BSA, pH 7.3.

Aliquoting is unnecessary for -20°C storage

For technical support and original validation data for this product please contact:

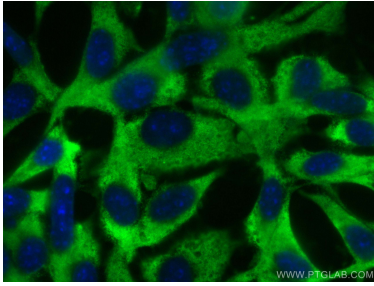
T: 4006900926

E: Proteintech-CN@ptglab.com

W: ptgcn.com

This product is exclusively available under Proteintech Group brand and is not available to purchase from any other manufacturer.

Selected Validation Data



Immunofluorescent analysis of (-20°C Ethanol)
fixed NIH/3T3 cells using CoraLite® Plus 488
RAB10 antibody (CL488-11808) at dilution of 1:200.