

For Research Use Only

CoraLite® Plus 488-conjugated IgG Kappa Light Chain Polyclonal antibody

Catalog Number: CL488-11781



Basic Information

Catalog Number:

CL488-11781

Source:

Rabbit

Isotype:

IgG

Immunogen Catalog Number:

AG2406

GenBank Accession Number:

BC030814

GeneID (NCBI):

28299

Full Name:

immunoglobulin kappa variable 1-5

Calculated MW:

239 aa, 26 kDa

Observed MW:

26 kDa, 13 kDa

Purification Method:

Antigen affinity purification

Recommended Dilutions:

IF-P: 1:50-1:500

Excitation/Emission maxima

wavelengths:

493 nm / 522 nm

Applications

Tested Applications:

IF-P

Species Specificity:

human, mouse

Positive Controls:

IF-P: human tonsillitis tissue,

Background Information

This antibody detects the kappa light chain of human IgG.

Storage

Storage:

Store at -20°C. Avoid exposure to light. Stable for one year after shipment.

Storage Buffer:

PBS with 50% glycerol, 0.05% Proclin300, 0.5% BSA, pH7.3

Aliquoting is unnecessary for -20°C storage

For technical support and original validation data for this product please contact:

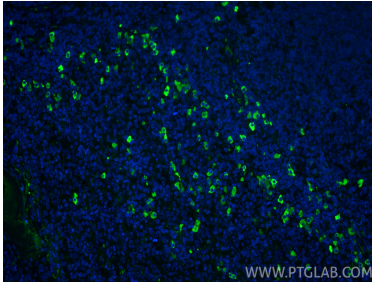
T: 4006900926

E: Proteintech-CN@ptglab.com

W: ptgcn.com

This product is exclusively available under Proteintech Group brand and is not available to purchase from any other manufacturer.

Selected Validation Data



Immunofluorescent analysis of (4% PFA) fixed paraffin-embedded human tonsillitis tissue using CoraLite® Plus 488 IgG Kappa Light Chain antibody (CL488-11781) at dilution of 1:200. Heat mediated antigen retrieval with Tris-EDTA buffer (pH 9.0).