

For Research Use Only

# CoraLite® Plus 488-conjugated RAB1A Polyclonal antibody



Catalog Number: **CL488-11671**

Featured Product

## Basic Information

Catalog Number:

CL488-11671

Size:

1000 µg/ml

Source:

Rabbit

Isotype:

IgG

Immunogen Catalog Number:

AG2264

GenBank Accession Number:

BC000905

GeneID (NCBI):

5861

UNIPROT ID:

P62820

Full Name:

RAB1A, member RAS oncogene family

Calculated MW:

205 aa, 23 kDa

Observed MW:

23 kDa

Purification Method:

Antigen affinity purification

Recommended Dilutions:

IF/ICC 1:200-1:800

Excitation/Emission maxima  
wavelengths:

493 nm / 522 nm

## Applications

Tested Applications:

IF/ICC

Species Specificity:

human, mouse, rat

Positive Controls:

IF/ICC : NIH/3T3 cells,

## Background Information

Rab1A is a member of the Rab family of small GTPases with a well characterized function in the regulation of vesicle trafficking from the endoplasmic reticulum to the Golgi apparatus and within Golgi compartments. Rab1A has recently been reported an mTORC1 activator and a colorectal oncogene (Janice D. Thomas. et al. 2014. Cancer cell).

## Storage

Storage:

Store at -20°C. Avoid exposure to light. Stable for one year after shipment.

Storage Buffer:

PBS with 50% Glycerol, 0.05% Proclin300, 0.5% BSA, pH 7.3.

Aliquoting is unnecessary for -20°C storage

For technical support and original validation data for this product please contact:

T: 4006900926

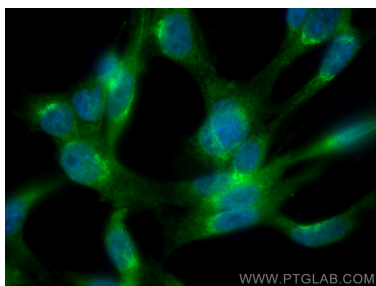
E: [Proteintech-CN@ptglab.com](mailto:Proteintech-CN@ptglab.com)

W: [ptgcn.com](http://ptgcn.com)

This product is exclusively available under Proteintech Group brand and is not available to purchase from any other manufacturer.

---

## Selected Validation Data



Immunofluorescent analysis of (4% PFA) fixed NIH/3T3 cells using CoraLite® Plus 488 RAB1A antibody (CL488-11671) at dilution of 1:400.