

# CoraLite®488-conjugated FUS/TLS Polyclonal antibody

Catalog Number: **CL488-11570**

## Basic Information

**Catalog Number:**

CL488-11570

**Size:**

1000 µg/ml

**Source:**

Rabbit

**Isotype:**

IgG

**Immunogen Catalog Number:**

AG2150

**GenBank Accession Number:**

BC026062

**GeneID (NCBI):**

2521

**UNIPROT ID:**

P35637

**Full Name:**

fusion (involved in t(12;16) in malignant liposarcoma)

**Calculated MW:**

75 kDa

**Purification Method:**

Antigen affinity purification

**Recommended Dilutions:**

IF/ICC 1:50-1:500

**Excitation/Emission maxima wavelengths:**

491 nm / 516 nm

## Applications

**Tested Applications:**

IF/ICC, FC (Intra)

**Species Specificity:**

human, mouse, rat

**Positive Controls:**

IF/ICC : HepG2 cells, HeLa cells

## Background Information

FUS (also named TLS and POMp75) belongs to the RRM TET family. FUS may play a role in the maintenance of genomic integrity; it binds both single-stranded and double-stranded DNA and promotes ATP-independent annealing of complementary single-stranded DNAs and D-loop formation in superhelical double-stranded DNA. FUS is also an RNA-binding protein, and its links to neurodegenerative disease proffer the intriguing possibility that altered RNA metabolism or RNA processing may underlie or contribute to neuron degeneration[PMID: 22640227]. FUS may be a cause of angiomatoid fibrous histiocytoma (AFH) and is implicated in certain forms of amyotrophic lateral sclerosis (ALS) and frontotemporal dementias (FTDs) such as frontotemporal lobar dementia with ubiquitin inclusions (FTLD-U)[PMID: 22640227]. This antibody is a rabbit polyclonal antibody raised against an internal region of human FUS. This antibody is conjugated with CL488, Ex/Em 488 nm/515 nm.

## Storage

**Storage:**

Store at -20°C. Avoid exposure to light. Stable for one year after shipment.

**Storage Buffer:**

PBS with 50% Glycerol, 0.05% Proclin300, 0.5% BSA, pH 7.3.

Aliquoting is unnecessary for -20°C storage

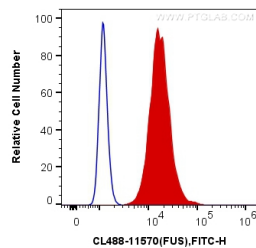
For technical support and original validation data for this product please contact:

T: 4006900926

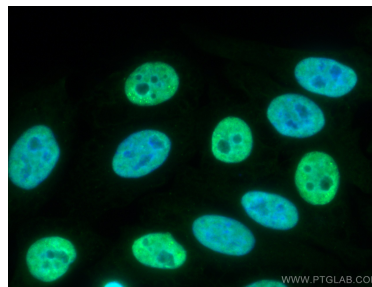
E: [Proteintech-CN@ptglab.com](mailto:Proteintech-CN@ptglab.com)W: [ptgcn.com](http://ptgcn.com)

This product is exclusively available under Proteintech Group brand and is not available to purchase from any other manufacturer.

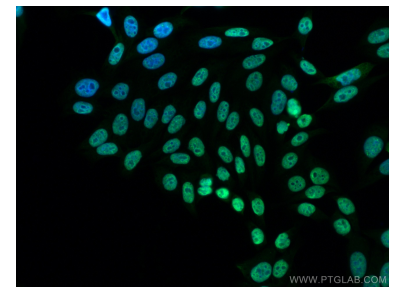
## Selected Validation Data



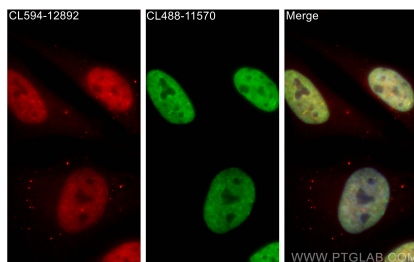
1X10<sup>6</sup> MCF-7 cells were intracellularly stained with 0.2 ug CoraLite®488 Anti-Human FUS/TLS (CL488-11570) (red), or 0.2 ug Control Antibody. Cells were fixed and permeabilized with Transcription Factor Staining Buffer Kit (PF00011).



Immunofluorescent analysis of (4% PFA) fixed HepG2 cells using CoraLite®488 FUS/TLS antibody (CL488-11570) at dilution of 1:200.



Immunofluorescent analysis of (4% PFA) fixed HepG2 cells using CoraLite®488 FUS/TLS antibody (CL488-11570) at dilution of 1:200.



Immunofluorescent analysis of (4% PFA) fixed HeLa cells using CoraLite®488 FUS/TLS antibody (CL488-11570) at dilution of 1:200, CoraLite®594 TDP-43 (C-terminal) antibody (CL594-12892, red).