

For Research Use Only

# CoraLite® Plus 488-conjugated IgG Lambda Light Chain Polyclonal antibody



Catalog Number: **CL488-11541**

## Basic Information

Catalog Number: CL488-11541	GenBank Accession Number: BC020233	Purification Method: Antigen affinity purification
Size: 1000 µg/ml	GeneID (NCBI): 3535	Recommended Dilutions: IF-P 1:50-1:500
Source: Rabbit	Full Name: immunoglobulin lambda locus	Excitation/Emission maxima wavelengths: 493 nm / 522 nm
Isotype: IgG	Calculated MW: 237 aa, 25 kDa	
Immunogen Catalog Number: AG2064	Observed MW: 25 kDa	

## Applications

Tested Applications:  
IF-P  
Species Specificity:  
human

Positive Controls:  
IF-P : human tonsillitis tissue,

## Background Information

This antibody detects the lambda light chain of human IgG.

## Storage

Storage:  
Store at -20°C. Avoid exposure to light.  
Storage Buffer:  
PBS with 50% Glycerol, 0.05% Proclin300, 0.5% BSA, pH 7.3.  
Aliquoting is unnecessary for -20°C storage

For technical support and original validation data for this product please contact:

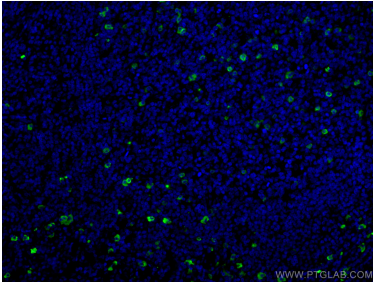
T: 4006900926

E: [Proteintech-CN@ptglab.com](mailto:Proteintech-CN@ptglab.com)

W: [ptgcn.com](http://ptgcn.com)

This product is exclusively available under Proteintech Group brand and is not available to purchase from any other manufacturer.

## Selected Validation Data



Immunofluorescent analysis of (4% PFA) fixed human tonsillitis tissue using CoraLite® Plus 488 IgG Lambda Light Chain antibody (CL488-11541) at dilution of 1:200.