

For Research Use Only

CoraLite® Plus 488-conjugated FBF1 Polyclonal antibody



Catalog Number: **CL488-11531**

Featured Product

Basic Information

Catalog Number:

CL488-11531

Size:

1000 µg/ml

Source:

Rabbit

Isotype:

IgG

Immunogen Catalog Number:

AG2106

GenBank Accession Number:

BC023549

GeneID (NCBI):

85302

UNIPROT ID:

Q8TES7

Full Name:

Fas (TNFRSF6) binding factor 1

Calculated MW:

1133 aa, 125 kDa

Observed MW:

130 kDa

Purification Method:

Antigen affinity purification

Recommended Dilutions:

IF/ICC 1:50-1:500

Excitation/Emission maxima wavelengths:

493 nm / 522 nm

Applications

Tested Applications:

IF/ICC

Species Specificity:

human, mouse

Positive Controls:

IF/ICC : A549 cells, HUVEC cells

Background Information

FBF1, also named as ALB and KIAA1863, is keratin-binding protein required for epithelial cell polarization. It is involved in apical junction complex (AJC) assembly via its interaction with PARD3. FBF1 is required for ciliogenesis. FBF1 has six isoforms with MW 125-127 kDa, 99 kDa, 69 kDa and 55 kDa. This antibody is induced by N-terminal (20-347aa) of FBF1. It recognizes all the six isoforms.

Storage

Storage:

Store at -20°C. Avoid exposure to light.

Storage Buffer:

PBS with 50% Glycerol, 0.05% Proclin300, 0.5% BSA, pH 7.3.

Aliquoting is unnecessary for -20°C storage

For technical support and original validation data for this product please contact:

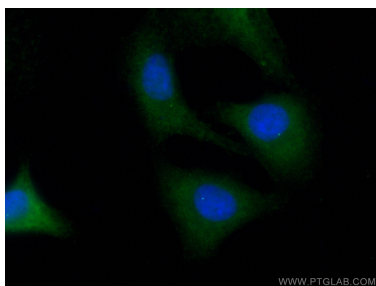
T: 4006900926

E: Proteintech-CN@ptglab.com

W: ptgcn.com

This product is exclusively available under Proteintech Group brand and is not available to purchase from any other manufacturer.

Selected Validation Data



Immunofluorescent analysis of (4% PFA) fixed A549 cells using CoraLite® Plus 488 FBF1 antibody (CL488-11531) at dilution of 1:200.