

For Research Use Only

CoraLite® Plus 488-conjugated BubR1 Polyclonal antibody



Catalog Number: **CL488-11504**

Featured Product

Basic Information

Catalog Number:

CL488-11504

Size:

1000 µg/ml

Source:

Rabbit

Isotype:

IgG

Immunogen Catalog Number:

AG2053

GenBank Accession Number:

BC018739

GeneID (NCBI):

701

UNIPROT ID:

O60566

Full Name:

budding uninhibited by
benzimidazoles 1 homolog beta
(yeast)

Calculated MW:

1050 aa, 120 kDa

Observed MW:

120-130 kDa

Purification Method:

Antigen affinity purification

Recommended Dilutions:

IF/ICC 1:50-1:500

Excitation/Emission maxima
wavelengths:

493 nm / 522 nm

Applications

Tested Applications:

IF/ICC

Species Specificity:

human, mouse

Positive Controls:

IF/ICC : SKOV-3 cells,

Background Information

BUB1B(Mitotic checkpoint serine/threonine-protein kinase BUB1 beta), also named as BUBR1, MAD3 and SSK1, belongs to the BUB1 subfamily. Human BUB1B is a 120 kDa protein that plays a central role in the spindle assembly checkpoint (SAC), the evolutionary conserved and self-regulatory system of higher organisms that monitors and repairs defects in chromosome segregation in mitotic cells(PMID:22201036). In addition to phosphorylation, BUB1B is also subjected to posttranslational modifications including acetylation(PMID:22167194). Defects in BUB1B are the cause of premature chromatid separation trait (PCS) and mosaic variegated aneuploidy syndrome type 1 (MVA1).

Storage

Storage:

Store at -20°C. Avoid exposure to light. Stable for one year after shipment.

Storage Buffer:

PBS with 50% Glycerol, 0.05% Proclin300, 0.5% BSA, pH 7.3.

Aliquoting is unnecessary for -20°C storage

For technical support and original validation data for this product please contact:

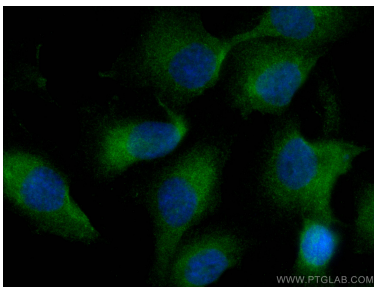
T: 4006900926

E: Proteintech-CN@ptglab.com

W: ptgcn.com

This product is exclusively available under Proteintech Group brand and is not available to purchase from any other manufacturer.

Selected Validation Data



Immunofluorescent analysis of (4% PFA) fixed SKOV-3 cells using CoraLite® Plus 488 BubR1 antibody (CL488-11504) at dilution of 1:100.