

CoraLite® Plus 488-conjugated UMP/CMP kinase Polyclonal antibody

Catalog Number: **CL488-11360**

Basic Information

Catalog Number:

CL488-11360

Size:

1000 µg/ml

Source:

Rabbit

Isotype:

IgG

Immunogen Catalog Number:

AG1920

GenBank Accession Number:

BC014961

GeneID (NCBI):

51727

UNIPROT ID:

P30085

Full Name:cytidine monophosphate (UMP-CMP)
kinase 1, cytosolic**Calculated MW:**

228 aa, 26 kDa

Observed MW:

22-26 kDa

Purification Method:

Antigen affinity purification

Recommended Dilutions:

IF/ICC 1:50-1:500

**Excitation/Emission maxima
wavelengths:**

493 nm / 522 nm

Applications

Tested Applications:

IF/ICC

Species Specificity:

human, mouse, rat

Positive Controls:

IF/ICC : HeLa cells,

Background Information

Pyrimidine nucleoside monophosphate kinase [UMP/CMP kinase (UMP/CMPK)] (CMPK1) is also named as CMK, CMPK, UCK, UMK, UMPK and belongs to the adenylate kinase family. It plays a crucial role in the formation of UDP, CDP, and dCDP, which are required for cellular nucleic acid synthesis (PMID:11912132). CMK1 can use a broad spectrum of phosphate donors but the best phosphate donors are ATP and dATP. CMK1 has been reported as a prognostic marker for non-small cell lung cancer, pancreatic cancer and breast cancer (PMID: 21642870, 22838950, 27558661). The longest deduced protein contains 228 amino acids and has a calculated molecular mass of 26 kD. However, translation likely begins at the second initiation methionine, resulting in a protein of 196 amino acids (PMID:10462544). The shorter form is the endogenously translated protein (PMID:11912132). CMK1 has 3 isoforms with the molecular mass of 22, 16 and 26 kDa.

Storage

Storage:

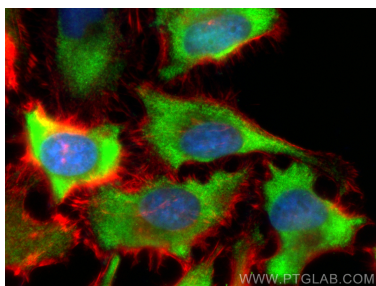
Store at -20°C. Avoid exposure to light. Stable for one year after shipment.

Storage Buffer:

PBS with 50% Glycerol, 0.05% Proclin300, 0.5% BSA, pH 7.3.

Aliquoting is unnecessary for -20°C storage

Selected Validation Data



Immunofluorescent analysis of (-20°C Ethanol)
fixed HeLa cells using CoraLite® Plus 488
UMP/CMP kinase antibody (CL488-11360) at
dilution of 1:200, CL594-Phalloidin (red).