

For Research Use Only

CoraLite® Plus 488-conjugated Ribosomal protein L4 Polyclonal antibody



Catalog Number: **CL488-11302**

Featured Product

Basic Information

Catalog Number:
CL488-11302

Size:
1000 µg/ml

Source:
Rabbit

Isotype:
IgG

Immunogen Catalog Number:
AG1828

GenBank Accession Number:
BC009888

GeneID (NCBI):
6124

UNIPROT ID:
P36578

Full Name:
ribosomal protein L4

Calculated MW:
48 kDa

Observed MW:
48 kDa

Purification Method:
Antigen affinity purification

Recommended Dilutions:
IF 1:50-1:500

Excitation/Emission maxima
wavelengths:
493 nm / 522 nm

Applications

Tested Applications:
IF/ICC

Species Specificity:
human, mouse, rat

Positive Controls:

IF : HepG2 cells,

Background Information

60S ribosomal protein L4 is encoded by RPL4 (or RPL1) gene. RPL4 is a component of 60S subunit of ribosome, and belongs to the L4E family. By interacting with c-Myb, RPL4 plays a important role in c-myc expression in response to growth factor and nutritional signals. Recently RPL4 was reported to be able to increase efficiency of viral recoding sequence.

Storage

Storage:

Store at -20°C. Avoid exposure to light. Stable for one year after shipment.

Storage Buffer:

PBS with 50% Glycerol, 0.05% Proclin300, 0.5% BSA, pH 7.3.

Aliquoting is unnecessary for -20°C storage

For technical support and original validation data for this product please contact:

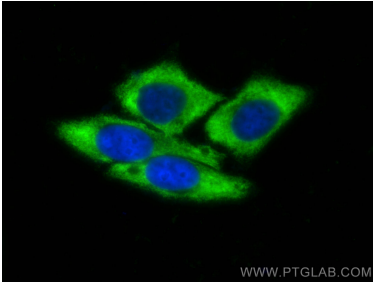
T: 4006900926

E: Proteintech-CN@ptglab.com

W: ptgcn.com

This product is exclusively available under Proteintech Group brand and is not available to purchase from any other manufacturer.

Selected Validation Data



Immunofluorescent analysis of (-20°C Ethanol)
fixed HepG2 cells using CoraLite® Plus 488
Ribosomal protein L4 antibody (CL488-11302) at
dilution of 1:200.