

For Research Use Only

CoraLite® Plus 488-conjugated HLA-DPB1 Polyclonal antibody



Catalog Number: CL488-11298

Basic Information

Catalog Number:

CL488-11298

Size:

1000 µg/ml

Source:

Rabbit

Isotype:

IgG

Immunogen Catalog Number:

AG1815

GenBank Accession Number:

BC015000

GeneID (NCBI):

3115

UNIPROT ID:

P04440

Full Name:

major histocompatibility complex, class II, DP beta 1

Calculated MW:

29 kDa

Observed MW:

29 kDa

Purification Method:

Antigen affinity purification

Excitation/Emission maxima wavelengths:

493 nm / 522 nm

Applications

Tested Applications:

FC (Intra)

Species Specificity:

human

Background Information

Storage

Storage:

Store at -20°C. Avoid exposure to light. Stable for one year after shipment.

Storage Buffer:

PBS with 50% Glycerol, 0.05% Proclin300, 0.5% BSA, pH 7.3.

Aliquoting is unnecessary for -20°C storage

For technical support and original validation data for this product please contact:

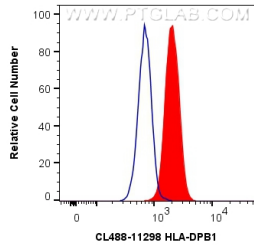
T: 4006900926

E: Proteintech-CN@ptglab.com

W: ptgcn.com

This product is exclusively available under Proteintech Group brand and is not available to purchase from any other manufacturer.

Selected Validation Data



1X10⁶ Daudi cells were intracellularly stained with 0.8 ug CoraLite® Plus 488 Anti-Human HLA-DPB1 (CL488-11298) (red), or 0.8 ug Isotype Control. Cells were fixed with 4% PFA and permeabilized with Flow Cytometry Perm Buffer (PF00011-C).