

For Research Use Only



# CoraLite® Plus 488-conjugated ATG3 Polyclonal antibody

Catalog Number: **CL488-11262**

## Basic Information

Catalog Number:

CL488-11262

Size:

1000 µg/ml

Source:

Rabbit

Isotype:

IgG

Immunogen Catalog Number:

AG1785

GenBank Accession Number:

BC024221

GeneID (NCBI):

64422

UNIPROT ID:

Q9NT62

Full Name:

ATG3 autophagy related 3 homolog  
(S. cerevisiae)

Calculated MW:

36 kDa

Observed MW:

36-40 kDa

Purification Method:

Antigen affinity purification

Recommended Dilutions:

IF/ICC 1:50-1:500

Excitation/Emission maxima  
wavelengths:

493 nm / 522 nm

## Applications

Tested Applications:

IF/ICC

Species Specificity:

human, mouse, rat

Positive Controls:

IF/ICC : HEK-293 cells,

## Background Information

Autophagy is a lysosome-dependent conserved catabolic process in response to various stresses, such as oxidative stress and ischemia, for the degradation and recycling of aged or dysfunctional intracellular components and damaged organelles. A large group of autophagy-related genes (ATGs) have been identified as essential drivers in different stages of autophagy. Autophagy-related 3 (ATG3), one of the autophagy-related gene family members, serves as an E2-like enzyme contributing to the conjugation of microtubule-associated protein light chain 3 (LC3) to lipid phosphatidylethanolamine (PE). ATG3 plays a significant role in the regulation of autophagy, viability, and death.

## Storage

Storage:

Store at -20°C. Avoid exposure to light. Stable for one year after shipment.

Storage Buffer:

PBS with 50% Glycerol, 0.05% Proclin300, 0.5% BSA, pH 7.3.

Aliquoting is unnecessary for -20°C storage

For technical support and original validation data for this product please contact:

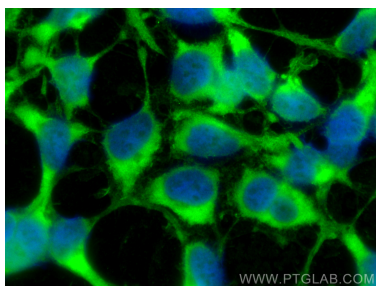
T: 4006900926

E: [Proteintech-CN@ptglab.com](mailto:Proteintech-CN@ptglab.com)

W: [ptgcn.com](http://ptgcn.com)

This product is exclusively available under Proteintech Group brand and is not available to purchase from any other manufacturer.

## Selected Validation Data



Immunofluorescent analysis of (-20°C Ethanol)  
fixed HEK-293 cells using CoraLite® Plus 488 ATG3  
antibody (CL488-11262) at dilution of 1:200.