

For Research Use Only

CoraLite® Plus 488-conjugated Annexin A2 Polyclonal antibody

Catalog Number: CL488-11256

Featured Product



Basic Information

Catalog Number:

CL488-11256

Source:

Rabbit

Isotype:

IgG

Immunogen Catalog Number:

AG1777

GenBank Accession Number:

BC016774

GeneID (NCBI):

302

ENSEMBL Gene ID:

ENSG00000182718

UNIPROT ID:

P07355

Full Name:

annexin A2

Calculated MW:

339 aa, 39 kDa

Observed MW:

35-40 kDa

Purification Method:

Antigen affinity purification

Recommended Dilutions:

IF/ICC: 1:50-1:500

FC (Intra): 0.40 ug per 10⁶ cells in a 100 µl suspension

Excitation/Emission maxima wavelengths:

493 nm / 522 nm

Applications

Tested Applications:

IF/ICC, FC (Intra)

Species Specificity:

human, mouse, rat

Positive Controls:

IF/ICC : MCF-7 cells, HeLa cells

FC (Intra) : K-562 cells, HeLa cells

Background Information

Annexin A2 (ANXA2), also named Annexin-2 or Lipocortin II, is a Ca²⁺ binding protein that is up-regulated in virally transformed cell lines and human tumors. This calcium-regulated membrane-binding protein, whose affinity for calcium is greatly enhanced by anionic phospholipids, may cross-link plasma membrane phospholipids with actin and the cytoskeleton and be involved with exocytosis. Heat-stress response may also involve Annexin-2.

Storage

Storage:

Store at -20°C. Avoid exposure to light. Stable for one year after shipment.

Storage Buffer:

PBS with 50% glycerol, 0.05% Proclin300, 0.5% BSA, pH7.3

Aliquoting is unnecessary for -20°C storage

For technical support and original validation data for this product please contact:

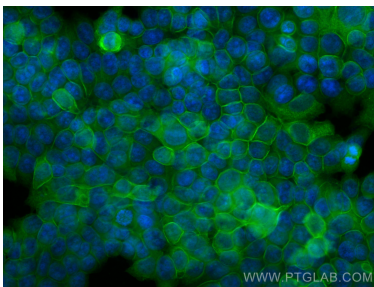
T: 4006900926

E: Proteintech-CN@ptglab.com

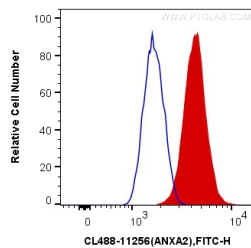
W: ptgcn.com

This product is exclusively available under Proteintech Group brand and is not available to purchase from any other manufacturer.

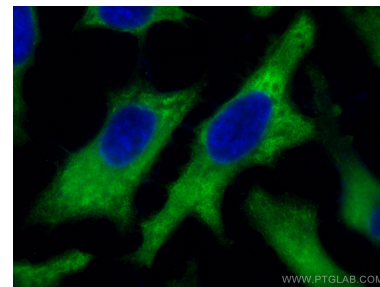
Selected Validation Data



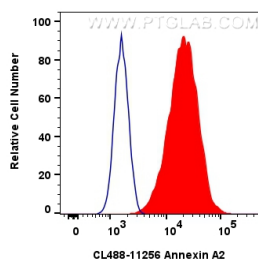
Immunofluorescent analysis of (-20°C Methanol) fixed MCF-7 cells using Coralite® Plus 488 Annexin A2 antibody (CL488-11256) at dilution of 1:200.



1x10⁶ K-562 cells were intracellularly stained with 0.4 ug Coralite® Plus 488 Anti-Human Annexin A2 (CL488-11256) (red), or 0.4 ug Control Antibody. Cells were fixed with 4% PFA and permeabilized with Flow Cytometry Perm Buffer.



Immunofluorescent analysis of (-20°C Ethanol) fixed HeLa cells using Coralite® Plus 488 Annexin A2 antibody (CL488-11256) at dilution of 1:200.



1x10⁶ HeLa cells were intracellularly stained with 0.8 ug Coralite® Plus 488-conjugated Annexin A2 Polyclonal antibody (CL488-11256)(red), or 0.8 ug Coralite® Plus 488-conjugated Rabbit IgG control Rabbit PolyAb (CL488-30000) (blue). Cells were fixed with 4% PFA and permeabilized with Flow Cytometry Perm Buffer.