

For Research Use Only

# CoraLite® Plus 488-conjugated MMAB Polyclonal antibody



Catalog Number: **CL488-11137**

## Basic Information

Catalog Number:

CL488-11137

Size:

1000 µg/ml

Source:

Rabbit

Isotype:

IgG

Immunogen Catalog Number:

AG1602

GenBank Accession Number:

BC011831

GeneID (NCBI):

326625

UNIPROT ID:

Q96EY8

Full Name:

methylmalonic aciduria (cobalamin deficiency) cblB type

Calculated MW:

27 kDa

Observed MW:

27 kDa

Purification Method:

Antigen affinity purification

Recommended Dilutions:

IF/ICC 1:50-1:500

Excitation/Emission maxima wavelengths:

493 nm / 522 nm

## Applications

Tested Applications:

IF/ICC, FC (Intra)

Species Specificity:

human, mouse

Positive Controls:

IF/ICC : HeLa cells,

## Background Information

The MMAB gene encodes cob(I)alamin adenosyltransferase, which catalyzes the final step in the synthesis of the coenzyme adenosylcobalamin (AdoCbl). AdoCbl is a vitamin B12-containing coenzyme for methylmalonyl-CoA mutase. The deduced 250-amino acid protein has a calculated molecular mass of 27.3 kD.

## Storage

Storage:

Store at -20°C. Avoid exposure to light. Stable for one year after shipment.

Storage Buffer:

PBS with 50% Glycerol, 0.05% Proclin300, 0.5% BSA, pH 7.3.

Aliquoting is unnecessary for -20°C storage

For technical support and original validation data for this product please contact:

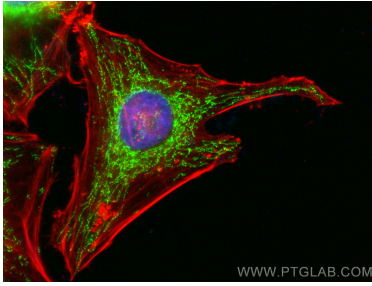
T: 4006900926

E: [Proteintech-CN@ptglab.com](mailto:Proteintech-CN@ptglab.com)

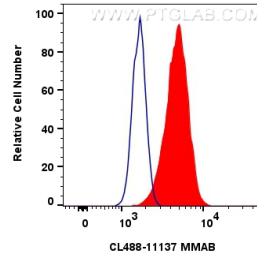
W: [ptgcn.com](http://ptgcn.com)

This product is exclusively available under Proteintech Group brand and is not available to purchase from any other manufacturer.

## Selected Validation Data



Immunofluorescent analysis of (4% PFA) fixed HeLa cells using Coralite® Plus 488 MMAB antibody (CL488-11137) at dilution of 1:200, CL594-Phalloidin (red).



1x10<sup>6</sup> HeLa cells were intracellularly stained with 0.8 ug Coralite® Plus 488-conjugated MMAB Polyclonal antibody (CL488-11137)(red), or 0.8 ug Coralite® Plus 488-conjugated Rabbit IgG control Rabbit PolyAb (CL488-30000) (blue). Cells were fixed with 4% PFA and permeabilized with Flow Cytometry Perm Buffer (PF00011-C).