

For Research Use Only

# CoraLite® Plus 488-conjugated GABARAPL1 Polyclonal antibody

Catalog Number: CL488-11010

Featured Product



## Basic Information

Catalog Number:

CL488-11010

Size:

1000 ug/ml

Source:

Rabbit

Isotype:

IgG

Immunogen Catalog Number:

AG1473

GenBank Accession Number:

BC009309

GeneID (NCBI):

23710

UNIPROT ID:

Q9HOR8

Full Name:

GABA(A) receptor-associated protein like 1

Calculated MW:

14 kDa

Observed MW:

16 kDa

Purification Method:

Antigen Affinity Purified

Recommended Dilutions:

IF/ICC 1:50-1:500

Excitation/Emission maxima wavelengths:

493 nm / 522 nm

## Applications

Tested Applications:

IF/ICC

Species Specificity:

human, mouse, rat

Positive Controls:

IF/ICC : Chloroquine treated HepG2 cells,

## Background Information

GABARAPL1 (GABARAP-like protein 1), also named as ATG8, GEC1, APG8L, ATG8L and APG8-LIKE, is a member of GABARP (GABAA receptor-associated protein) family. GABARAPL1 was initially identified as estrogen-regulated gene and the protein acts in receptor and vesicle transport. It's also involved in the process of autophagy like GABARAP and GABARAPL2, and may be considered as an autophagic marker. It is expressed at very high levels in the brain, heart, peripheral blood leukocytes, liver, kidney, placenta and skeletal muscle and at very low levels in thymus and small intestine. The antibody is specific to GABARAPL1, and it doesn't recognize the recombinant GABARAP and GABARAPL2.

## Storage

Storage:

Store at -20°C. Avoid exposure to light. Stable for one year after shipment.

Storage Buffer:

PBS with 50% Glycerol, 0.05% Proclin300, 0.5% BSA, pH 7.3.

Aliquoting is unnecessary for -20°C storage

For technical support and original validation data for this product please contact:

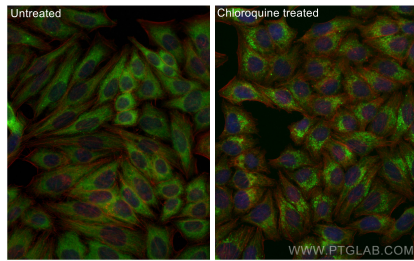
T: 4006900926

E: [Proteintech-CN@ptglab.com](mailto:Proteintech-CN@ptglab.com)

W: [ptgcn.com](http://ptgcn.com)

This product is exclusively available under Proteintech Group brand and is not available to purchase from any other manufacturer.

## Selected Validation Data



Immunofluorescent analysis of (-20°C Ethanol) fixed Chloroquine treated HepG2 cells using CoraLite® Plus 488 GABARAPL1-Specific antibody (CL488-11010) at dilution of 1:200, CL594-Phalloidin (red).