

CoraLite® Plus 488-conjugated Myosin Light Chain 2/MLC-2V Polyclonal antibody

Catalog Number: **CL488-10906****1 Publications**

Basic Information

Catalog Number:

CL488-10906

Size:

1000 µg/ml

Source:

Rabbit

Isotype:

IgG

Immunogen Catalog Number:

AG1356

GenBank Accession Number:

BC015821

GeneID (NCBI):

4633

UNIPROT ID:

P10916

Full Name:myosin, light chain 2, regulatory,
cardiac, slow**Calculated MW:**

19 kDa

Observed MW:

19 kDa

Purification Method:

Antigen affinity purification

Recommended Dilutions:

IF-P 1:50-1:500

**Excitation/Emission maxima
wavelengths:**

493 nm / 522 nm

Applications

Tested Applications:

IF-P

Cited Applications:

IF

Species Specificity:

human, mouse, rat, zebrafish

Cited Species:

human

Positive Controls:

IF-P: mouse heart tissue,

Background Information

MYL2, also named as MLC-2v and MLC-2, is ventricular/cardiac muscle isoform. Defects in MYL2 are the cause of cardiomyopathy familial hypertrophic type 10 (CMH10). Defects in MYL2 are the cause of cardiomyopathy familial hypertrophic with mid-left ventricular chamber type 2 (MVC2). MYL2 has been widely used as a marker of mature ventricular cardiomyocytes. There are four genes of myosin light chain 2 (MLC2): MYL2 (MLC2v), MYL5, MYL7 (MLC2a) and MYL9 (MLC2c). While usually myosin light chain 2 is referred to MYL2.

Notable Publications

Author	Pubmed ID	Journal	Application
Weiqi Zeng	37381027	Cell Commun Signal	IF

Storage

Storage:

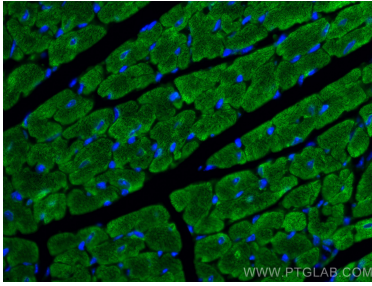
Store at -20°C. Avoid exposure to light.

Storage Buffer:

PBS with 50% Glycerol, 0.05% Proclin300, 0.5% BSA, pH 7.3.

Aliquoting is unnecessary for -20°C storage

Selected Validation Data



Immunofluorescent analysis of (4% PFA) fixed mouse heart tissue using CoraLite® Plus 488 Myosin Light Chain 2/MLC-2V antibody (CL488-10906) at dilution of 1:200.