

For Research Use Only

CoraLite® Plus 488-conjugated Cytokeratin 19 Polyclonal antibody



Catalog Number: CL488-10712

Basic Information

Catalog Number: CL488-10712	GenBank Accession Number: BC007628	Purification Method: Antigen affinity purification
Size: 1000 µg/ml	GeneID (NCBI): 3880	Excitation/Emission maxima wavelengths: 493 nm / 522 nm
Source: Rabbit	UNIPROT ID: P08727	
Isotype: IgG	Full Name: keratin 19	
Immunogen Catalog Number: AG1085	Calculated MW: 40 kDa	

Applications

Tested Applications:
IF/ICC

Species Specificity:
human, mouse

Background Information

Keratins are a large family of proteins that form the intermediate filament cytoskeleton of epithelial cells. Keratin expression is highly regulated, tissue specific, and varies according to cell-state. Type I keratins consist of acidic, low molecular weight proteins with MW ranging from 40 kDa (KRT19) to 64 kDa (KRT9). Type 2 keratins consist of basic or neutral, high molecular weight proteins with MW from 52 kDa (KRT8) to 67 kDa (KRT18). Keratin 19 is a type I cytokeratin. It is a biochemical marker of skin stem cells in vivo and in vitro.

Storage

Storage:
Store at -20°C. Avoid exposure to light. Stable for one year after shipment.

Storage Buffer:
PBS with 50% Glycerol, 0.05% Proclin300, 0.5% BSA, pH 7.3.

Aliquoting is unnecessary for -20°C storage

For technical support and original validation data for this product please contact:

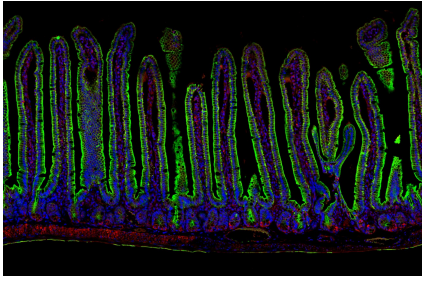
T: 4006900926

E: Proteintech-CN@ptglab.com

W: ptgcn.com

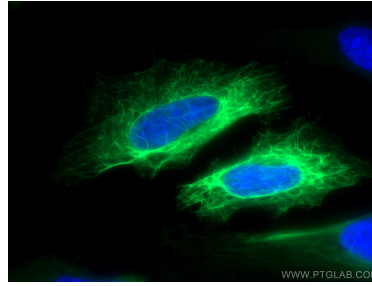
This product is exclusively available under Proteintech Group brand and is not available to purchase from any other manufacturer.

Selected Validation Data



▲
▼

Adult mouse small intestine stained for Cytokeratin 19 (green, CL488-10712) and BMI1 (red, 10832-1-AP). BMI1 stains intestinal stem cells located at the base of the villi. As these stem cells differentiate into intestinal epithelial cells, they acquire Cytokeratin 19 expression. Cytokeratin 19 was conjugated to Coralite 488. Samples were fixed in 4% PFA, embedded in paraffin, and imaged on a confocal microscope. Image credit: @Immunofluorescence on Instagram.



Immunofluorescent analysis of (-20°C Methanol) fixed HeLa cells using CoraLite® Plus 488 Cytokeratin 19 antibody (CL488-10712) at dilution of 1:200.