

For Research Use Only

CoraLite® Plus 488-conjugated Smac/DIABLO Polyclonal antibody

Catalog Number: CL488-10434

Featured Product



Basic Information

Catalog Number:

CL488-10434

Size:

1000 ug/ml

Source:

Rabbit

Isotype:

IgG

Immunogen Catalog Number:

AG0696

GenBank Accession Number:

BC011909

GeneID (NCBI):

56616

UNIPROT ID:

Q9NR28

Full Name:

diablo homolog (Drosophila)

Calculated MW:

27 kDa

Observed MW:

20 kDa

Purification Method:

Antigen affinity purification

Recommended Dilutions:

IF/ICC 1:50-1:500

Excitation/Emission maxima wavelengths:

493 nm / 522 nm

Applications

Tested Applications:

IF/ICC, FC (Intra)

Species Specificity:

human, mouse, rat

Positive Controls:

IF/ICC : HeLa cells,

Background Information

Smac/DIABLO is a mitochondrial protein that promotes apoptosis by neutralizing members of the IAP family. SMAC/DIABLO is ubiquitously expressed in normal tissues, and the expression of SMAC messenger RNA (mRNA) in adult testis is the highest. Smac/DIABLO encodes a 239 amino acid protein (~27 kDa). The first 55 amino acids are a mitochondrial targeting signal peptide that is cleaved to generate mature Smac-DIABLO (~21 kDa). When released from mitochondria, Smac-DIABLO acts as a natural antagonist of inhibitor of apoptosis proteins (IAPs). Smac-DIABLO antagonistic activity is based on its N-terminal tetrapeptide (AVPI) that binds baculoviral IAP repeat (BIR) domains of IAPs, releasing their inhibitory effects on both initiator and effector caspases, thus promoting cell death. (PMID: 32325691, PMID: 32575872, PMID: 25650938)

Storage

Storage:

Store at -20°C. Avoid exposure to light. Stable for one year after shipment.

Storage Buffer:

PBS with 50% Glycerol, 0.05% Proclin300, 0.5% BSA, pH 7.3.

Aliquoting is unnecessary for -20°C storage

For technical support and original validation data for this product please contact:

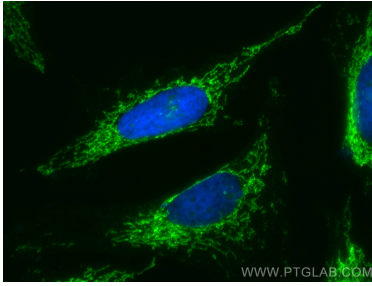
T: 4006900926

E: Proteintech-CN@ptglab.com

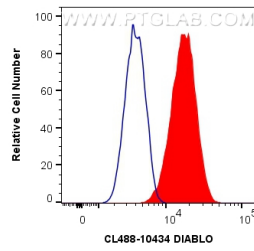
W: ptgcn.com

This product is exclusively available under Proteintech Group brand and is not available to purchase from any other manufacturer.

Selected Validation Data



Immunofluorescent analysis of (4% PFA) fixed HeLa cells using CoraLite® Plus 488 DIABLO antibody (CL488-10434) at dilution of 1:100.



1X10⁶ HeLa cells were intracellularly stained with 0.8 ug CoraLite® Plus 488 Anti-Human DIABLO (CL488-10434) (red), or 0.8 ug Isotype Control. Cells were fixed with 4% PFA and permeabilized with Flow Cytometry Perm Buffer (PF00011-C).