

For Research Use Only

# CoraLite® Plus 488-conjugated MOV10 Polyclonal antibody



Catalog Number: **CL488-10370**

Featured Product

## Basic Information

Catalog Number:

CL488-10370

Size:

1000 µg/ml

Source:

Rabbit

Isotype:

IgG

Immunogen Catalog Number:

AG0384

GenBank Accession Number:

BC002548

GeneID (NCBI):

4343

UNIPROT ID:

Q9HCE1

Full Name:

Mov10, Moloney leukemia virus 10,  
homolog (mouse)

Calculated MW:

114 kDa

Observed MW:

110-115 kDa

Purification Method:

Antigen affinity purification

Recommended Dilutions:

IF/ICC 1:50-1:500

Excitation/Emission maxima  
wavelengths:

493 nm / 522 nm

## Applications

Tested Applications:

IF/ICC, FC (Intra)

Species Specificity:

human, mouse, rat

Positive Controls:

IF/ICC : HepG2 cells,

## Background Information

MOV10, also named as KIAA1631, belongs to the DNA2/NAM7 helicase family and SDE3 subfamily. It is required for RNA-mediated gene silencing by the RNA-induced silencing complex (RISC). Human MOV10 may regulate a wide range of RNA viruses and could also control the retrotransposition of endogenous retroelements in mammals(PMID:22727223). MOV10 has a broad antiretroviral activity that can target a wide range of retroviruses, and it could be actively involved in host defense against retroviral infection. MOV10 can potently inhibit HIV-1 replication at multiple stages(PMID:20215113). It is involved in the progression of telomerase-catalyzing reaction via the interaction of telomerase protein and telomere DNA.

## Storage

Storage:

Store at -20°C. Avoid exposure to light.

Storage Buffer:

PBS with 50% Glycerol, 0.05% Proclin300, 0.5% BSA, pH 7.3.

Aliquoting is unnecessary for -20°C storage

For technical support and original validation data for this product please contact:

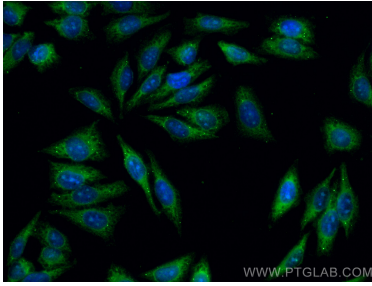
T: 4006900926

E: [Proteintech-CN@ptglab.com](mailto:Proteintech-CN@ptglab.com)

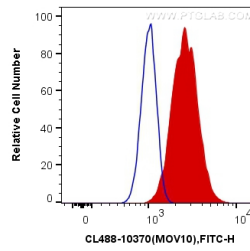
W: [ptgcn.com](http://ptgcn.com)

This product is exclusively available under Proteintech Group brand and is not available to purchase from any other manufacturer.

## Selected Validation Data



Immunofluorescent analysis of (-20°C Methanol) fixed HepG2 cells using CoraLite® Plus 488 MOV10 antibody (CL488-10370) at dilution of 1:200.



1X10<sup>6</sup> HeLa cells were intracellularly stained with 0.4 ug CoraLite® Plus 488 Anti-Human MOV10 (CL488-10370) (red), or 0.4 ug Control Antibody. Cells were fixed with 4% PFA and permeabilized with Flow Cytometry Perm Buffer (PF00011-C).