

# CoraLite® Plus 488-conjugated TGFB1 / BIGH3 Polyclonal antibody

Catalog Number: CL488-10188

Featured Product

## Basic Information

**Catalog Number:**

CL488-10188

**Size:**

1000 µg/ml

**Source:**

Rabbit

**Isotype:**

IgG

**Immunogen Catalog Number:**

AG0241

**GenBank Accession Number:**

BC000097

**GeneID (NCBI):**

7045

**ENSEMBL Gene ID:**

ENSG00000120708

**UNIPROT ID:**

Q15582

**Full Name:**

transforming growth factor, beta-induced, 68kDa

**Calculated MW:**

683 aa, 75 kDa

**Purification Method:**

Antigen affinity purification

**Excitation/Emission maxima wavelengths:**

493 nm / 522 nm

## Applications

**Tested Applications:**

FC (Intra)

**Species Specificity:**

human, mouse, rat

## Background Information

TGFB1, also named as BIGH3, Kerato-epithelin and RGD-CAP, binds to type I, II, and IV collagens. TGFB1 is an adhesion protein which may play an important role in cell-collagen interactions. In cartilage, it may be involved in endochondral bone formation. TGFB1 is an extracellular matrix adaptor protein, it has been reported to be differentially expressed in transformed tissues. TGFB1 is a predictive factor of the response to chemotherapy, and suggest the use of TGFB1-derived peptides as possible therapeutic adjuvants for the enhancement of responses to chemotherapy. (PMID:20509890) Defects in TGFB1 are the cause of epithelial basement membrane corneal dystrophy (EBMD). Defects in TGFB1 are the cause of corneal dystrophy Groenouw type 1 (CDGG1). Defects in TGFB1 are the cause of corneal dystrophy lattice type 1 (CDL1). Defects in TGFB1 are a cause of corneal dystrophy Thiel-Behnke type (CTDB). Defects in TGFB1 are the cause of Reis-Buecklers corneal dystrophy (CDRB). Defects in TGFB1 are the cause of lattice corneal dystrophy type 3A (CDL3A). Defects in TGFB1 are the cause of Avellino corneal dystrophy (ACD).

## Storage

**Storage:**

Store at -20°C. Avoid exposure to light.

**Storage Buffer:**

PBS with 50% Glycerol, 0.05% Proclin300, 0.5% BSA, pH 7.3.

Aliquoting is unnecessary for -20°C storage

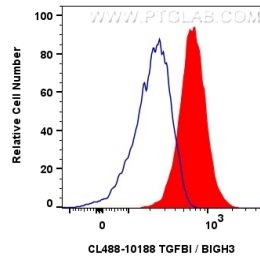
For technical support and original validation data for this product please contact:

T: 4006900926

E: [Proteintech-CN@ptglab.com](mailto:Proteintech-CN@ptglab.com)W: [ptgcn.com](http://ptgcn.com)

This product is exclusively available under Proteintech Group brand and is not available to purchase from any other manufacturer.

## Selected Validation Data



1x10<sup>6</sup> Y79 cells were intracellularly stained with 0.8 ug CoraLite® Plus 488-conjugated TGFBI / BIGH3 Polyclonal antibody (CL488-10188)(red), or 0.8 ug CoraLite® Plus 488-conjugated Rabbit IgG control Rabbit PolyAb (CL488-30000) (blue). Cells were fixed with 4% PFA and permeabilized with Flow Cytometry Perm Buffer (PF00011-C).