

CoraLite® Plus 488-conjugated Recoverin Polyclonal antibody

Catalog Number: **CL488-10073**

Basic Information

Catalog Number:

CL488-10073

Size:

1000 µg/ml

Source:

Rabbit

Isotype:

IgG

Immunogen Catalog Number:

AG0119

GenBank Accession Number:

BC001720

GeneID (NCBI):

5957

UNIPROT ID:

P35243

Full Name:

recoverin

Calculated MW:

24 kDa

Observed MW:

23 kDa

Purification Method:

Antigen affinity purification

Recommended Dilutions:

IF-P 1:50-1:500

Excitation/Emission maxima wavelengths:

493 nm / 522 nm

Applications

Tested Applications:

IF-P

Species Specificity:

human, mouse, rat

Positive Controls:

IF-P : mouse eye tissue,

Background Information

Recoverin, belonging to a family of the neuronal calcium sensor (NCS) proteins, has a restricted expression in retinal photoreceptors or neurons or neuroendocrine cells. It has been suggested to play a role in light and dark adaptation by regulating rhodopsin phosphorylation. Recently, it has been found that autoantibodies against recoverin (24 kDa) have been strongly associated with cancer-associated retinopathy (CAR) syndrome, a paraneoplastic disease of the retina. But functions of recoverin in cancer cells remain unknown.

Storage

Storage:

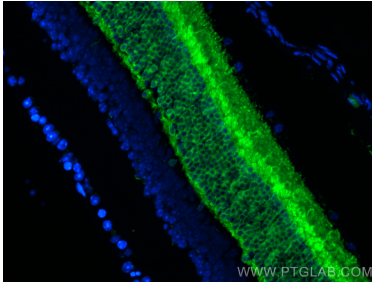
Store at -20°C. Avoid exposure to light. Stable for one year after shipment.

Storage Buffer:

PBS with 50% Glycerol, 0.05% Proclin300, 0.5% BSA, pH 7.3.

Aliquoting is unnecessary for -20°C storage

Selected Validation Data



Immunofluorescent analysis of (4% PFA) fixed paraffin-embedded mouse eye tissue using CoraLite® Plus 488 Recoverin antibody (CL488-10073) at dilution of 1:200. Heat mediated antigen retrieval with Tris-EDTA buffer (pH 9.0).