

For Research Use Only

CoraLite® Plus 405 Rabbit scFv Isotype Control



Catalog Number: CL405-SF98136

Basic Information

Catalog Number:

CL405-SF98136

Source:

Rabbit

Type:

scFv

GenBank Accession Number:

GeneID (NCBI):

Full Name:

Purification Method:

Affinity purification

CloneNo.:

240953C9

Recommended Dilutions:

FC: 0.25 ug per 10⁶ cells in a 100 µl suspension

Excitation/Emission maxima wavelengths:

399 nm / 422 nm

Applications

Tested Applications:

FC

Species Specificity:

n/a

Positive Controls:

FC : human PBMCs,

Background Information

This product is an isotype control antibody, which is used to estimate the non-specific binding of target primary antibodies due to Fc receptor binding or other protein-protein interactions. An isotype control antibody should have the same immunoglobulin type and be used at the same concentration as the test antibody.

Storage

Storage:

Store at 2-8°C. Avoid exposure to light. Stable for one year after shipment.

Storage Buffer:

50mM HEPES, 150mM NaCl, 5mM EDTA, 0.1% CHAPS, 10% Sucrose and 0.1% Proclin 300, pH7.3

For technical support and original validation data for this product please contact:

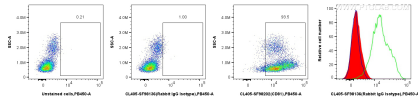
T: 4006900926

E: Proteintech-CN@ptglab.com

W: ptgcn.com

This product is exclusively available under Proteintech Group brand and is not available to purchase from any other manufacturer.

Selected Validation Data



1x10⁶ human PBMCs were surface stained with 0.25 ug CoraLite® Plus 405 Rabbit scFv Isotype Control (CL405-SF98136, Clone: 240953C9) (red in histogram) or 0.25 ug CoraLite® Plus 405 Anti-Human CD81 Rabbit scFv Antibody (CL405-SF98202, Clone: 241722G4) (green in histogram), or unstained (blue in histogram). Cells were not fixed.