

For Research Use Only

FcZero-rAb™ CoraLite® Plus 405 Anti-Mouse CD4 (RM4-4) Rabbit Recombinant Antibody

Catalog Number: CL405-FcA65655



Basic Information

Catalog Number:

CL405-FcA65655

Concentration:

100ug, 500 ug/ml

Source:

Rabbit

Isotype:

IgG

GenBank Accession Number:

BC039137

GeneID (NCBI):

12504

UNIPROT ID:

P06332

Full Name:

CD4 antigen

Purification Method:

Protein A purification

CloneNo.:

RM4-4

Recommended Dilutions:

FC: 0.25 ug per 10⁶ cells in a 100 µl suspension

Excitation/Emission maxima wavelengths:

399 nm / 422 nm

Applications

Tested Applications:

FC

Species Specificity:

mouse

Positive Controls:

FC : mouse splenocytes,

Background Information

CD4 is a 55-kDa transmembrane glycoprotein expressed on T helper cells, majority of thymocytes, monocytes, macrophages, and dendritic cells (PMID: 9304802; 12213222). CD4 is an accessory protein for MHC class-II antigen/T-cell receptor interaction. It plays an important role in T helper cell development and activation (PMID: 9539765; 3112582). CD4 serves as a receptor for the human immunodeficiency virus (HIV) (PMID: 9304802).

Storage

Storage:

Store at 2-8°C. Avoid exposure to light. Stable for one year after shipment.

Storage Buffer:

PBS with 0.09% sodium azide, pH7.3

For technical support and original validation data for this product please contact:

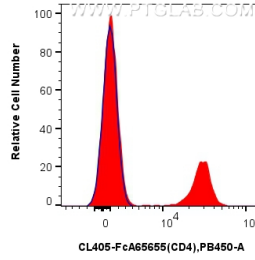
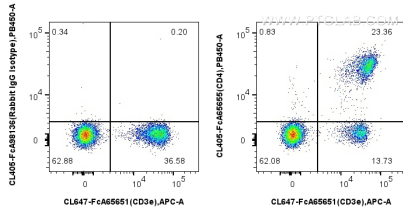
T: 4006900926

E: Proteintech-CN@ptglab.com

W: ptgcn.com

This product is exclusively available under Proteintech Group brand and is not available to purchase from any other manufacturer.

Selected Validation Data



1×10^6 mouse splenocytes were surface stained with FcZero-rAb™ CoraLite® Plus 647 Anti-Mouse CD3e (145-2C11), and 0.25 μ g CoraLite® Plus 405 Anti-Mouse CD4 (RM4-4) Rabbit IgG RecAb (CL405-FcA65655, Clone:RM4-4) or CoraLite® Plus 405 Rabbit IgG Isotype Control RecAb (CL405-FcA98136, Clone: 240953C9). Cells were not fixed.

1×10^6 mouse splenocytes were surface stained with 0.25 μ g CoraLite® Plus 405 Anti-Mouse CD4 (RM4-4) Rabbit IgG RecAb (CL405-FcA65655, Clone:RM4-4) (red) or CoraLite® Plus 405 Rabbit IgG Isotype Control RecAb (CL405-FcA98136, Clone: 240953C9) (blue). Cells were not fixed.