

For Research Use Only

FcZero-rAb® CoraLite® Plus 405 Anti-Human CD11b (ICRF44) Rabbit Recombinant Antibody



Catalog Number: CL405-FcA65582

Basic Information

Catalog Number:

CL405-FcA65582

Concentration:

100 tests, 5 ul/test

Source:

Rabbit

Isotype:

IgG

GenBank Accession Number:

BC096346

GeneID (NCBI):

3684

ENSEMBL Gene ID:

ENSG00000169896

UNIPROT ID:

P11215

Full Name:

integrin, alpha M (complement component 3 receptor 3 subunit)

Calculated MW:

1152 aa, 127 kDa

Purification Method:

Protein A purification

CloneNo.:

ICRF44

Recommended Dilutions:

FC: 5 ul per 10⁶ cells in a 100 µl suspension

Excitation/Emission maximum wavelengths:

399 nm / 422 nm

Applications

Tested Applications:

FC

Species Specificity:

human

Positive Controls:

FC : human PBMCs,

Background Information

Integrins are cell adhesion receptors that are heterodimers composed of non-covalently associated α and β subunits (PMID: 9779984). CD11b, also known as Integrin alpha M or CR3A, belongs to the integrin alpha chain family. CD11b forms an α / β heterodimer with CD18 (integrin β 2). CD11b/CD18 is implicated in various adhesive interactions of monocytes, macrophages and granulocytes as well as in mediating the uptake of complement-coated particles and pathogens (PMID: 9558116; 20008295). CD11b/CD18 is a receptor for the complement protein fragment iC3b, and is also a receptor for fibrinogen, factor X and ICAM1 (PMID: 2971974; 15485828).

Storage

Storage:

Store at 2-8°C. Avoid exposure to light. Stable for one year after shipment.

Storage Buffer:

PBS with 0.09% sodium azide and 0.5% BSA, pH7.3

For technical support and original validation data for this product please contact:

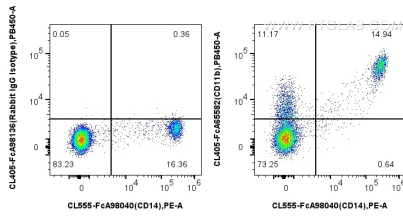
T: 4006900926

E: Proteintech-CN@ptglab.com

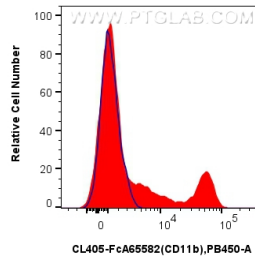
W: ptgcn.com

This product is exclusively available under Proteintech Group brand and is not available to purchase from any other manufacturer.

Selected Validation Data



1x10⁶ human PBMCs were surface stained with FcZero-rAb® CoraLite® Plus 555 Anti-Human CD14, and 5 ul CoraLite® Plus 405 Anti-Human CD11b (ICRF44) Rabbit RecAb (CL405-FcA65582, Clone: ICRF44) or FcZero-rAb® CoraLite® Plus 405 Rabbit IgG Isotype Control Recombinant Antibody (CL405-FcA98136, Clone: 240953C9). Cells were not fixed.



1x10⁶ human PBMCs were surface stained with 5 ul CoraLite® Plus 405 Anti-Human CD11b (ICRF44) Rabbit RecAb (CL405-FcA65582, Clone: ICRF44) (red) or FcZero-rAb® CoraLite® Plus 405 Rabbit IgG Isotype Control Recombinant Antibody (CL405-FcA98136, Clone: 240953C9) (blue). Cells were not fixed.