

For Research Use Only

CoraLite® Plus 405 Mouse IgG2a, κ Isotype Control Recombinant Antibody

Catalog Number:CL405-98599



Basic Information

Catalog Number:

CL405-98599

Concentration:

100ug, 500 ug/ml

Source:

Mouse

Isotype:

IgG2a

GenBank Accession Number:

GeneID (NCBI):

Full Name:

Purification Method:

Protein A purification

CloneNo.:

252252A1

Recommended Dilutions:

FC: 0.25 ug per 10^6 cells in a 100 μ l suspension

Excitation/Emission maxima wavelengths:

399 nm / 422 nm

Applications

Tested Applications:

FC

Species Specificity:

n/a

Positive Controls:

FC : THP-1 cells, rat splenocytes cells

Background Information

This product is an isotype control antibody, which is used to estimate the non-specific binding of target primary antibodies due to Fc receptor binding or other protein-protein interactions. An isotype control antibody should have the same immunoglobulin type and be used at the same concentration as the test antibody.

Storage

Storage:

Store at 2-8°C. Avoid exposure to light. Stable for one year after shipment.

Storage Buffer:

PBS with 0.09% sodium azide, pH7.3

For technical support and original validation data for this product please contact:

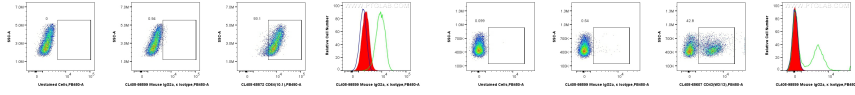
T: 4006900926

E: Proteintech-CN@ptglab.com

W: ptgcn.com

This product is exclusively available under Proteintech Group brand and is not available to purchase from any other manufacturer.

Selected Validation Data



1x10⁶ THP-1 cells were surface stained with 0.25 ug CoraLite® Plus 405 Mouse IgG2a, κ Isotype Control RecAb (CL405-98599, Clone:252252A1) (red in histogram) or unstained (blue in histogram) or 0.25 ug CoraLite® Plus 405 Anti-Human CD64 (10.1) Mouse IgG2a Recombinant Antibody (CL405-65572, Clone: 10.1) (green in histogram). Cells were incubated with FC Receptor Block prior to staining. Cells were not fixed.

1x10⁶ rat splenocytes cells were surface stained with 0.25 ug CoraLite® Plus 405 Mouse IgG2a, κ Isotype Control RecAb (CL405-98599, Clone:252252A1) (red in histogram) or unstained (blue in histogram) or 0.25 ug CoraLite® Plus 405 Anti-Rat CD43 (W3/13) Mouse IgG2a Recombinant Antibody (CL405-65607, Clone: W3/13) (green in histogram). Cells were incubated with FC Receptor Block prior to staining. Cells were not fixed.