

For Research Use Only

# CoraLite® Plus 405 Anti-Human CD206 Rabbit Recombinant Antibody

Catalog Number: CL405-98458-3



## Basic Information

<b>Catalog Number:</b> CL405-98458-3	<b>GenBank Accession Number:</b> NM_002438.4	<b>Purification Method:</b> Protein A purification
<b>Concentration:</b> 100tests, 5 ul/test	<b>GeneID (NCBI):</b> 4360	<b>CloneNo.:</b> 250381C1
<b>Source:</b> Rabbit	<b>UNIPROT ID:</b> P22897-1	<b>Recommended Dilutions:</b> FC: 5 ul per 10 <sup>6</sup> cells in a 100 µl suspension
<b>Isotype:</b> IgG	<b>Full Name:</b> mannose receptor, C type 1	<b>Excitation/Emission maxima wavelengths:</b> 399 nm / 422 nm
<b>Immunogen Catalog Number:</b> EG2428	<b>Calculated MW:</b> 166 kDa	

## Applications

<b>Tested Applications:</b> FC	<b>Positive Controls:</b> FC : GM-CSF, IL-4 and IL-10 treated human PBMCs,
<b>Species Specificity:</b> human	

## Background Information

CD206, also named as MMR, CLEC13D and MRC1, is a type I membrane receptor that mediates the endocytosis of glycoproteins by macrophages. CD206 has been shown to bind high-mannose structures on the surface of potentially pathogenic viruses, bacteria, and fungi so that they can be neutralized by phagocytic engulfment. CD206 is a 170 kDa transmembrane protein which contains 5 domains: an amino-terminal cysteine-rich region, a fibronectin type II repeat, a series of eight tandem lectin-like carbohydrate recognition domains (responsible for the recognition of mannose and fucose), a transmembrane domain, and an intracellular carboxy-terminal tail. It is expressed on most tissue macrophages, in vitro derived dendritic cells, lymphatic and sinusoidal endothelia.

## Storage

**Storage:**  
Store at 2-8°C. Avoid exposure to light. Stable for one year after shipment.  
**Storage Buffer:**  
PBS with 0.09% sodium azide and 0.5% BSA, pH7.3

For technical support and original validation data for this product please contact:

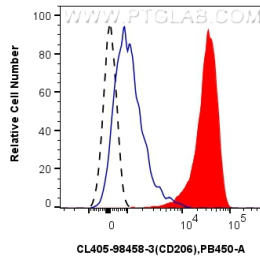
T: 4006900926

E: [Proteintech-CN@ptglab.com](mailto:Proteintech-CN@ptglab.com)

W: [ptgcn.com](http://ptgcn.com)

**This product is exclusively available under Proteintech Group brand and is not available to purchase from any other manufacturer.**

## Selected Validation Data



$1 \times 10^6$  GM-CSF, IL-4 and IL-10 treated human PBMCs were surface stained with 5  $\mu$ l CoraLite® Plus 405 Anti-Human CD206 Rabbit RecAb (CL405-98458-3, Clone: 250381C1) (red) or CoraLite® Plus 405 Rabbit IgG Isotype Control RecAb (CL405-98136, Clone: 240953C9) (blue).  $1 \times 10^6$  untreated human PBMCs were surface stained with 5  $\mu$ l CoraLite® Plus 405 Anti-Human CD206 Rabbit RecAb (CL405-98458-3, Clone: 250381C1) (black, dashed). Cells were not fixed.