

For Research Use Only

CoraLite® Plus 405 Rat IgG2a Isotype Control Recombinant Antibody

Catalog Number: CL405-98427



Basic Information

Catalog Number:

CL405-98427

Concentration:

100ug, 500 ug/ml

Source:

Rat

Isotype:

IgG

GenBank Accession Number:

GeneID (NCBI):

Full Name:

Purification Method:

Protein A purification

CloneNo.:

250862A1

Recommended Dilutions:

FC: 0.25 ug per 10⁶ cells in a 100 µl suspension

Excitation/Emission maxima wavelengths:

399 nm / 422 nm

Applications

Tested Applications:

FC

Species Specificity:

n/a

Positive Controls:

FC : mouse splenocytes,

Background Information

This product is an isotype control antibody, which is used to estimate the non-specific binding of target primary antibodies due to Fc receptor binding or other protein-protein interactions. An isotype control antibody should have the same immunoglobulin type and be used at the same concentration as the test antibody.

Storage

Storage:

Store at 2-8°C. Avoid exposure to light. Stable for one year after shipment.

Storage Buffer:

PBS with 0.09% sodium azide, pH7.3

For technical support and original validation data for this product please contact:

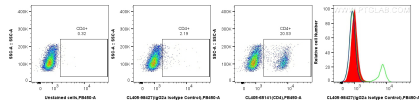
T: 4006900926

E: Proteintech-CN@ptglab.com

W: ptgcn.com

This product is exclusively available under Proteintech Group brand and is not available to purchase from any other manufacturer.

Selected Validation Data



1x10⁶ mouse splenocytes were surface stained with 0.25 ug CoraLite® Plus 405 Rat IgG2a Isotype Control RecAb (CL405-98427, Clone:250862A1) (red), or CoraLite® Plus 405 Anti-Mouse CD4 (RM4-5) (CL405-65141) (green), or unstained (blue). Cells were not fixed.