

For Research Use Only

CoraLite® Plus 405 Anti-Human Jagged1/CD339 Rabbit Recombinant Antibody

Catalog Number: **CL405-98243**



Basic Information

Catalog Number: CL405-98243	GenBank Accession Number: BC098393	Purification Method: Protein A purification
Concentration: 100tests, 5 ul/test	GeneID (NCBI): 182	CloneNo.: 241412A6
Source: Rabbit	UNIPROT ID: P78504	Excitation/Emission maxima wavelengths: 399 nm / 422 nm
Isotype: IgG	Full Name: jagged 1 (Alagille syndrome)	
	Calculated MW: 1218 aa, 134 kDa	

Applications

Tested Applications:
FC

Species Specificity:
human

Background Information

Jagged1 (JAG1), also known as CD339, is a type I, membrane-anchored, multi-domain protein and a ligand of the Notch receptor (PMID: 15358557). Jagged1 is composed of a relatively small intracellular domain, a transmembrane domain, and a larger extracellular component containing a cysteine-rich region, 16 EGF-like repeats, a DSL domain, and a signal peptide (PMID: 15358557; 26548814). It is widely expressed throughout mammalian development, across many tissues and developmental stages (PMID: 26548814). The Jagged1-NOTCH interaction can trigger the Notch signaling and activate transcription factors that play key roles in cell differentiation and morphogenesis.

Storage

Storage:
Store at 2-8°C. Avoid exposure to light. Stable for one year after shipment.

Storage Buffer:
PBS with 0.09% sodium azide and 0.5% BSA, pH7.3

For technical support and original validation data for this product please contact:

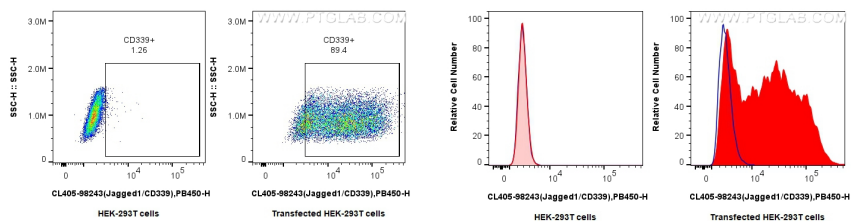
T: 4006900926

E: Proteintech-CN@ptglab.com

W: ptgcn.com

This product is exclusively available under Proteintech Group brand and is not available to purchase from any other manufacturer.

Selected Validation Data



1x10⁶ HEK-293T cells or Jagged1/CD339 transfected HEK-293T cells were surface stained with 0.25 ug CoraLite® Plus 405 Anti-Human Jagged1/CD339 Rabbit RecAb (CL405-98243, Clone:241412A6) or 0.25 ug CoraLite® Plus 405 Rabbit IgG Isotype Control RecAb (CL405-98136, Clone: 240953C9). Cells were not fixed.

1x10⁶ HEK-293T cells or Jagged1/CD339 transfected HEK-293T cells were surface stained with 0.25 ug CoraLite® Plus 405 Anti-Human Jagged1/CD339 Rabbit RecAb (CL405-98243, Clone:241412A6) (red), or 0.25 ug CoraLite® Plus 405 Rabbit IgG Isotype Control RecAb (CL405-98136, Clone: 240953C9) (blue). Cells were not fixed.