

For Research Use Only

# CoraLite® Plus 405 Anti-Human CD2 (TS1/8) Mouse IgG2a Recombinant Antibody

Catalog Number: **CL405-65565**



## Basic Information

Catalog Number:

CL405-65565

Concentration:

100tests, 5 ul/test

Source:

Mouse

Isotype:

IgG2a

GenBank Accession Number:

BC033583

GeneID (NCBI):

914

ENSEMBL Gene ID:

ENSG00000116824

Full Name:

CD2 molecule

Calculated MW:

351 aa, 39 kDa

Purification Method:

Protein A purification

CloneNo.:

TS1/8

Excitation/Emission maxima wavelengths:

399 nm / 422 nm

## Applications

Tested Applications:

FC

Species Specificity:

human

## Background Information

CD2 is a cell surface glycoprotein present on a majority of thymocytes, all mature T cells and subset of NK cells but not on B lymphocytes. It is a pan T-cell marker. CD2 interacts with lymphocyte function-associated antigen (LFA-3/CD58) and CD48/BCM1 to mediate adhesion between T-cells and other cell types. CD2 is implicated in the triggering of T-cells, the cytoplasmic domain is implicated in the signaling function.

## Storage

Storage:

Store at 2-8°C. Avoid exposure to light. Stable for one year after shipment.

Storage Buffer:

PBS with 0.09% sodium azide and 0.5% BSA, pH7.3

For technical support and original validation data for this product please contact:

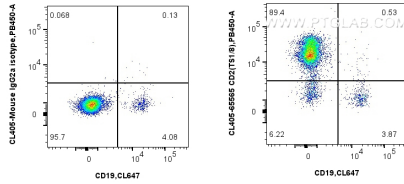
T: 4006900926

E: [Proteintech-CN@ptglab.com](mailto:Proteintech-CN@ptglab.com)

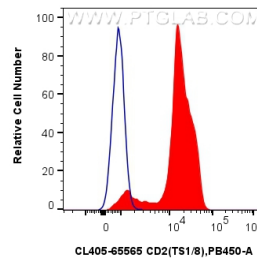
W: [ptgcn.com](http://ptgcn.com)

This product is exclusively available under Proteintech Group brand and is not available to purchase from any other manufacturer.

## Selected Validation Data



1x10<sup>6</sup> human PBMCs were surface stained with CoraLite® Plus 647 Anti-Human CD19 and 5 ul CoraLite® Plus 405 Anti-Human CD2 (TS1/8) Mouse IgG2a Recombinant Antibody (CL405-65565, Clone: TS1/8) (right), or CoraLite® Plus 405 Mouse IgG2a Isotype Control (C1.18.4) (CL405-65208, Clone: C1.18.4) (left). Cells were not fixed. Lymphocytes were gated.



1x10<sup>6</sup> human PBMCs were surface stained with 5 ul CoraLite® Plus 405 Anti-Human CD2 (TS1/8) Mouse IgG2a Recombinant Antibody (CL405-65565, Clone: TS1/8)(red), or CoraLite® Plus 405 Mouse IgG2a Isotype Control (C1.18.4) (CL405-65208, Clone: C1.18.4) (blue). Cells were not fixed. Lymphocytes were gated.