

For Research Use Only

CoraLite® Plus 405 Anti-Human CD146 (P1H12)



Catalog Number: **CL405-65181**

Basic Information

| | | |
|---------------------------------------|------------------------------------------------------|-------------------------------------------------------------------|
| Catalog Number: CL405-65181 | GenBank Accession Number: BC056418 | Purification Method: Affinity purification |
| Size: 100tests, 5 µl/test | GeneID (NCBI): 4162 | CloneNo.: P1H12 |
| Source: Mouse | UNIPROT ID: P43121 | Excitation/Emission maxima wavelengths: 399 nm / 422 nm |
| Isotype: IgG1, kappa | Full Name: melanoma cell adhesion molecule | |
| | Calculated MW: 646 aa, 72 kDa | |

Applications

Tested Applications:
FC

Species Specificity:
Rabbit, Canine, Mouse, Human

Background Information

CD146, also known as melanoma cell adhesion molecule (MCAM) or MUC18, originally identified as a biomarker of melanoma progression, is a transmembrane glycoprotein of 113-130 kDa, belonging to the immunoglobulin (Ig) superfamily (PMID: 8378324; 25993332). Structurally, it consists of five Ig domains, a transmembrane domain, and a cytoplasmic region. In normal adult tissue, CD146 is primarily expressed by vascular endothelium and smooth muscle. CD146 is a key cell adhesion protein in vascular endothelial cell activity and angiogenesis, and has been used as marker of circulating endothelium cells (CECs) (PMID: 19356677). In addition to the membrane-anchored form of CD146, a soluble form of CD146 (sCD146, 105 kDa) has also been found in human plasma and in the supernatant of cultured human endothelial cells (PMID: 9462829; 19229070; 16374253; 14597988).

Storage

Storage:
Store at 2-8°C. Avoid exposure to light. Stable for one year after shipment.

Storage Buffer:
PBS with 0.09% sodium azide and 0.5% BSA.

For technical support and original validation data for this product please contact:

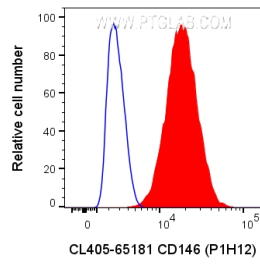
T: 4006900926

E: Proteintech-CN@ptglab.com

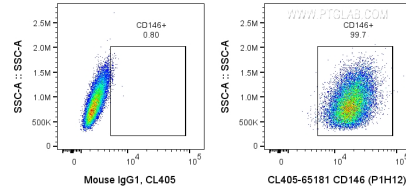
W: ptgcn.com

This product is exclusively available under Proteintech Group brand and is not available to purchase from any other manufacturer.

Selected Validation Data



1X10⁶ A375 cells were surface stained with 5 ul CoraLite® Plus 405 Anti-Human CD146 (CL405-65181, Clone:P1H12), or Mouse IgG1 Isotype Control. Cells were not fixed.



1X10⁶ A375 cells were surface stained with 5 ul CoraLite® Plus 405 Anti-Human CD146 (CL405-65181, Clone:P1H12), or Mouse IgG1 Isotype Control. Cells were not fixed.