

For Research Use Only

# CoraLite® Plus 405 Anti-Human CD45RO (UCHL1)

Catalog Number: CL405-65150



## Basic Information

Catalog Number:

CL405-65150

Concentration:

100 tests, 5 µl/test

Source:

Mouse

Isotype:

IgG2a, kappa

GenBank Accession Number:

BC014239

GeneID (NCBI):

5788

ENSEMBL Gene ID:

ENSG00000081237

UNIPROT ID:

P08575

Full Name:

protein tyrosine phosphatase, receptor type, C

Purification Method:

Affinity purification

CloneNo.:

UCHL1

Recommended Dilutions:

FC: 5 µl per 10<sup>6</sup> cells in 100 µl suspension

Excitation/Emission maxima wavelengths:

399 nm / 422 nm

## Applications

Tested Applications:

FC

Species Specificity:

human

Positive Controls:

FC : human PBMCs,

## Background Information

CD45, also known as protein tyrosine phosphatase, receptor type C, is a type I transmembrane protein expressed on the surface of all haematopoietic cells with the exception of erythrocytes and platelets (PMID: 3489673; 28615666). CD45 is a pan-haematopoietic cell marker and has been shown to be essential for T- and B-cell activation and signalling (PMID: 9429890; 16378097). CD45 exists as multiple isoforms due to alternative splicing of three exons (4, 5, and 6, designated A, B, and C) in the extracellular domain (PMID: 12414720). CD45RO is the shortest CD45 isoform (lacking all three exons) and is expressed by activated and memory T cells, thymocytes, some B cells, and weakly on granulocytes and macrophage (PMID: 27100180; 12414720).

## Storage

Storage:

Store at 2-8°C. Avoid exposure to light. Stable for one year after shipment.

Storage Buffer:

PBS with 0.09% sodium azide and 0.5% BSA, pH7.3

For technical support and original validation data for this product please contact:

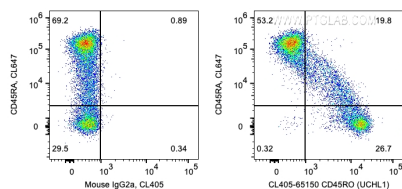
T: 4006900926

E: [Proteintech-CN@ptglab.com](mailto:Proteintech-CN@ptglab.com)

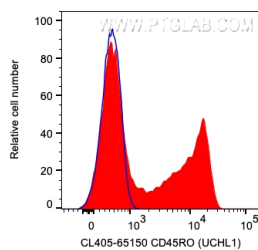
W: [ptgcn.com](http://ptgcn.com)

This product is exclusively available under Proteintech Group brand and is not available to purchase from any other manufacturer.

## Selected Validation Data



1X10<sup>6</sup> human PBMCs were surface co-stained with CoraLite® Plus 647 Anti-Human CD45RA and 5 ul CoraLite® Plus 405 Anti-Human CD45RO (CL405-65150, Clone:UCHL1) or Mouse IgG2a Isotype Control. Cells were not fixed. Lymphocytes were gated.



1X10<sup>6</sup> human PBMCs were surface stained with 5 ul CoraLite® Plus 405 Anti-Human CD45RO (CL405-65150, Clone:UCHL1) (red) or Mouse IgG2a Isotype Control. Cells were not fixed. Lymphocytes were gated.