

For Research Use Only

# CoraLite® Plus 405 Anti-Human CD3 (SK7)

Catalog Number: CL405-65148



## Basic Information

<b>Catalog Number:</b> CL405-65148	<b>GenBank Accession Number:</b> BC049847	<b>Purification Method:</b> Affinity purification
<b>Concentration:</b> 100 tests, 5 µl/test	<b>GeneID (NCBI):</b> 916	<b>CloneNo.:</b> SK7
<b>Source:</b> Mouse	<b>ENSEMBL Gene ID:</b> ENSG00000198851	<b>Recommended Dilutions:</b> FC: 5 µl per 10 <sup>6</sup> cells in 100 µl suspension
<b>Isotype:</b> IgG1, kappa	<b>Full Name:</b> CD3ε molecule, epsilon (CD3-TCR complex)	<b>Excitation/Emission maxima wavelengths:</b> 399 nm / 422 nm
	<b>Calculated MW:</b> 207 aa, 23 kDa	

## Applications

<b>Tested Applications:</b> FC	<b>Positive Controls:</b> FC : human PBMCs,
<b>Species Specificity:</b> human	

## Background Information

CD3 is a multimeric protein associated with the T-cell receptor (TCR) to form a complex involved in antigen recognition and signal transduction (PMID: 15885124). CD3 is composed of CD3  $\gamma$ ,  $\delta$ ,  $\epsilon$ , and  $\zeta$  chains (PMID: 1826255). It is expressed by thymocytes in a developmentally regulated manner, T cells, and some NK cells (PMID: 3289580). The TCR recognizes antigens bound to major histocompatibility complex (MHC) molecules. TCR-mediated peptide-MHC recognition is transmitted to the CD3 complex, leading to the intracellular signal transduction (PMID: 11985657).

## Storage

**Storage:**  
Store at 2-8°C. Avoid exposure to light. Stable for one year after shipment.  
**Storage Buffer:**  
PBS with 0.09% sodium azide and 0.5% BSA, pH7.3

For technical support and original validation data for this product please contact:

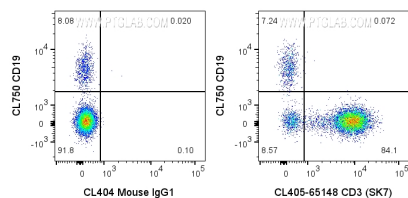
T: 4006900926

E: [Proteintech-CN@ptglab.com](mailto:Proteintech-CN@ptglab.com)

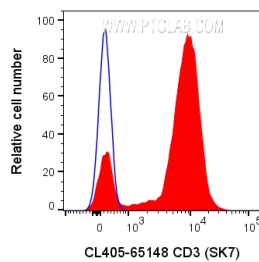
W: [ptgcn.com](http://ptgcn.com)

This product is exclusively available under Proteintech Group brand and is not available to purchase from any other manufacturer.

## Selected Validation Data



1x10<sup>6</sup> human PBMCs were surface stained with CL750 Anti-Human CD19 (CL750-65197) and 5 ul CoraLite® Plus 405 Anti-Human CD3 (CL405-65148, Clone: SK7) or CoraLite® Plus 405 Mouse IgG1 Isotype Control (CL405-65124, Clone: MOPC-21). Cells were not fixed. Lymphocytes were gated.



1x10<sup>6</sup> human PBMCs were surface stained with 5 ul CoraLite® Plus 405 Anti-Human CD3 (CL405-65148, Clone: SK7) or CoraLite® Plus 405 Mouse IgG1 Isotype Control (CL405-65124, Clone: MOPC-21). Cells were not fixed. Lymphocytes were gated.