

For Research Use Only

# CoraLite® Plus 405 Anti-Human CD4 (RPA-T4)



Catalog Number: **CL405-65143**

## Basic Information

Catalog Number:

CL405-65143

Size:

100tests, 5 ul/test

Source:

Mouse

Isotype:

IgG1, kappa

GenBank Accession Number:

BC025782

GeneID (NCBI):

920

ENSEMBL Gene ID:

ENSG00000010610

UNIPROT ID:

P01730

Full Name:

CD4 molecule

Calculated MW:

55 kDa

Purification Method:

Affinity purification

CloneNo.:

RPA-T4

Excitation/Emission maxima  
wavelengths:

399 nm / 422 nm

## Applications

Tested Applications:

FC

Species Specificity:

Human

## Background Information

CD4 is a 55-kDa transmembrane glycoprotein expressed on T helper cells, majority of thymocytes, monocytes, macrophages, and dendritic cells (PMID: 9304802; 12213222). CD4 is an accessory protein for MHC class-II antigen/T-cell receptor interaction. It plays an important role in T helper cell development and activation (PMID: 9539765; 3112582). CD4 serves as a receptor for the human immunodeficiency virus (HIV) (PMID: 9304802).

## Storage

Storage:

Store at 2-8°C. Avoid exposure to light. Stable for one year after shipment.

Storage Buffer:

PBS with 0.09% sodium azide and 0.5% BSA.

For technical support and original validation data for this product please contact:

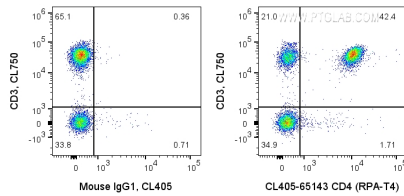
T: 4006900926

E: [Proteintech-CN@ptglab.com](mailto:Proteintech-CN@ptglab.com)

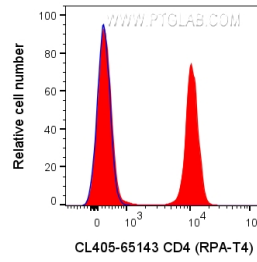
W: [ptgcn.com](http://ptgcn.com)

**This product is exclusively available under Proteintech Group brand and is not available to purchase from any other manufacturer.**

## Selected Validation Data



1X10<sup>6</sup> human PBMCs were surface co-stained with CoraLite® Plus 750 Anti-Human CD3 and 5 ul CoraLite® Plus 405 Anti-Human CD4 (CL405-65143, Clone:RPA-T4) or Mouse IgG1 Isotype Control. Cells were not fixed. Lymphocytes were gated.



1X10<sup>6</sup> human PBMCs were surface stained with 5 ul CoraLite® Plus 405 Anti-Human CD4 (CL405-65143, Clone:RPA-T4) (red) or Mouse IgG1 Isotype Control. Cells were not fixed. Lymphocytes were gated.